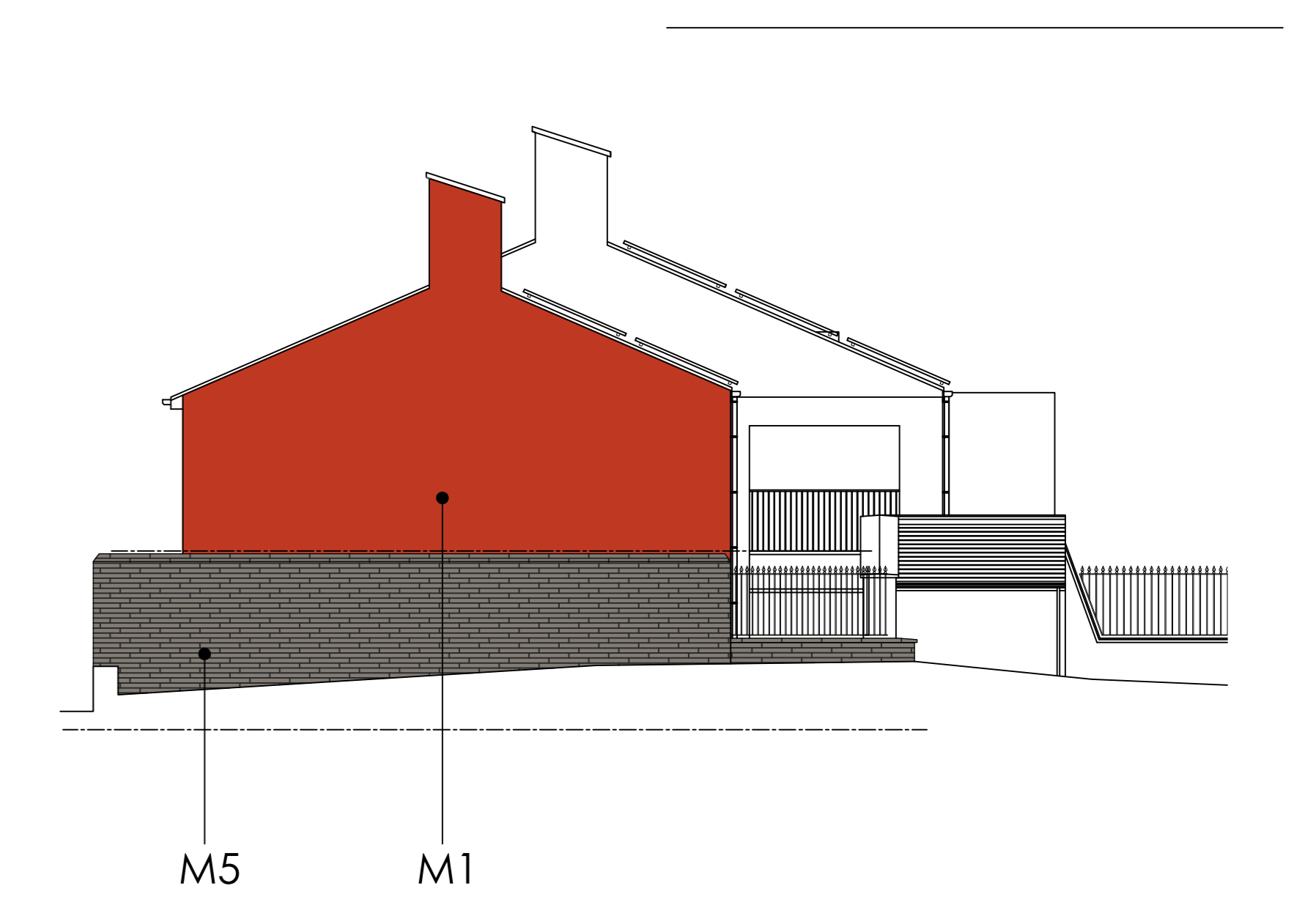
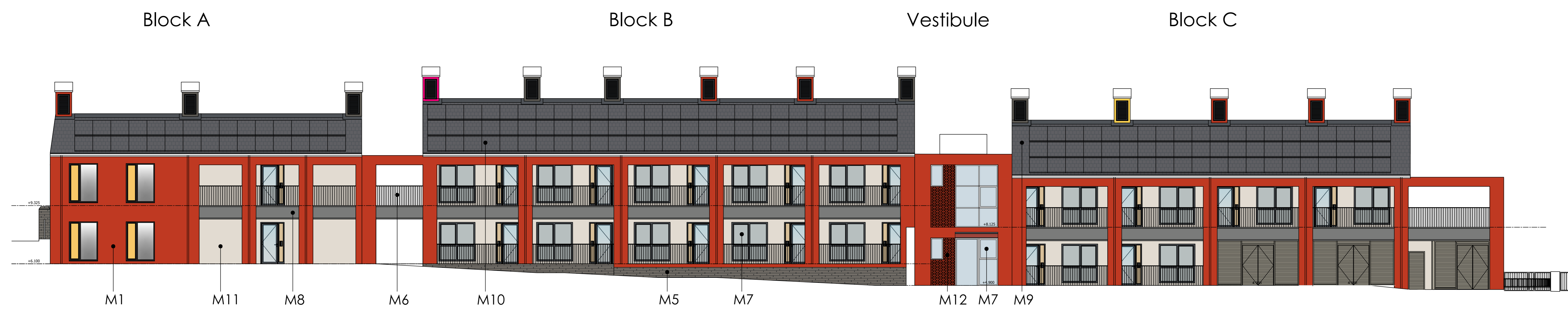


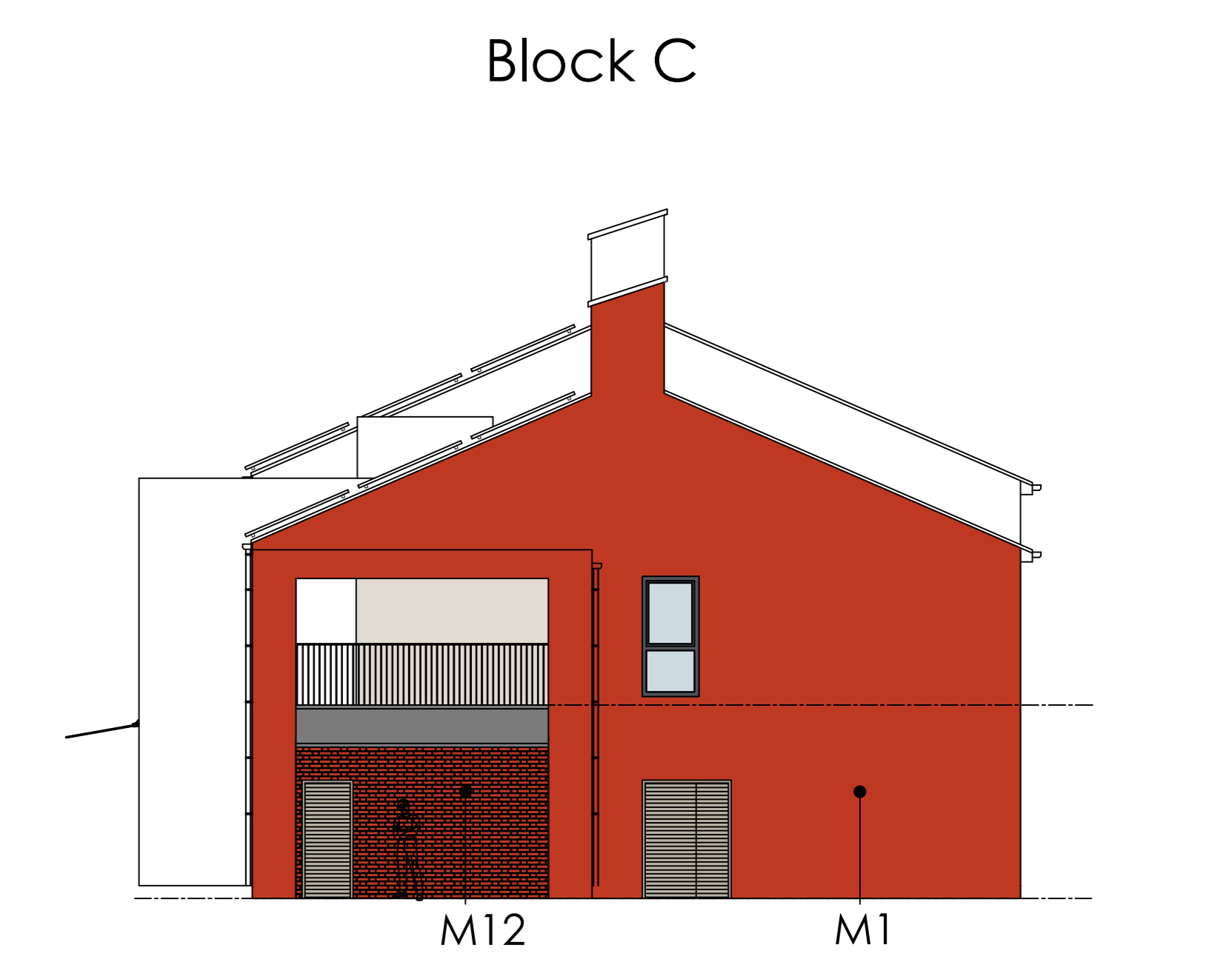
North (street side) Elevation



West Elevation



South Elevation



East Elevation

- Material Key**
- M1 Orange/ red facing brick
 - M2 Charcoal coloured facing brick
 - M3 Yellow coloured render
 - M4 Pink coloured render
 - M5 Solid stone walling (re-use of stone from now demolished Pont-y-Cleifon boundary wall)
 - M6 Painted metal railings
 - M7 Dark grey framed windows/ curtain walling
 - M8 Grey pressed metal fascia panel
 - M9 Slate effect roof tiles
 - M10 Photovoltaic panels (size and extent to be determined)
 - M11 Pale stone coloured render
 - M12 Orange/ red facing brick feature pattern

RESIDENTIAL - PROPOSED ELEVATIONS