

7.0 EXTERNAL MATERIALS

7.0 EXTERNAL MATERIALS RESPONDING TO CONTEXT

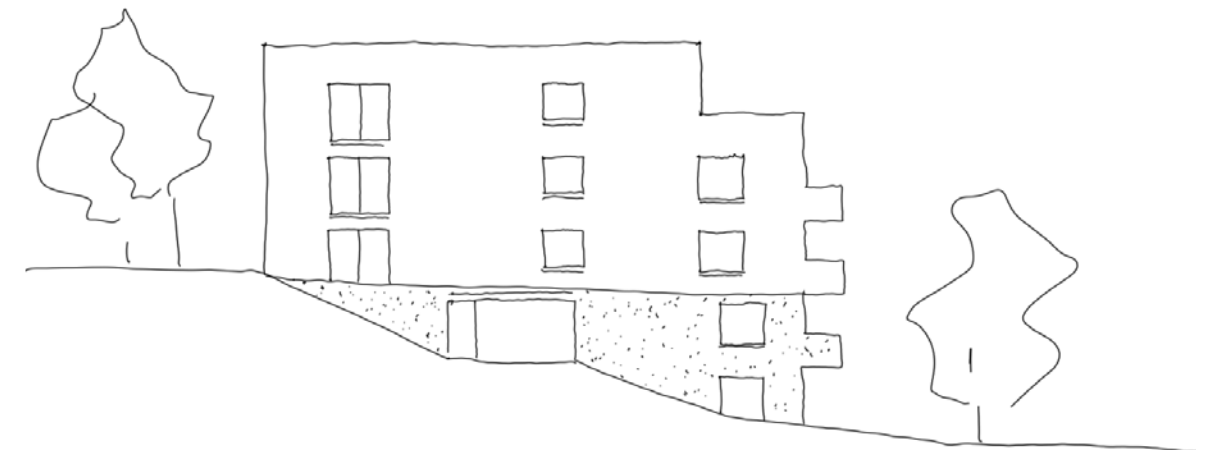
LOCAL INFLUENCE

The design draws influence from local materials to help bed the building into the village.

As the images show right, local homes often use rendered finishes with colour accents. Material datum lines are frequently expressed as a point to vary material, texture or colour.

Other more historic references include glazed brick linings to the furnaces at Cyfarthfa ironworks. And the crafted stonework of the nearby viaduct.

Rendered finishes/textures in combination glazed linings and stonework have been reinterpreted as part of the proposals to form a considered and elegant palette that feels part of it's surroundings.



7.0 EXTERNAL MATERIALS

PROPOSED MATERIALS

CONTEMPORARY RENDER FINISH

The building envelope is clad and finished with a contemporary and durable render finish. The earthy colour tone incorporates a varied texture between lower and upper levels as a nod to local homes that use a render finish with a datum line where the material changes.

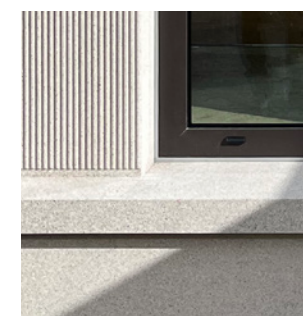
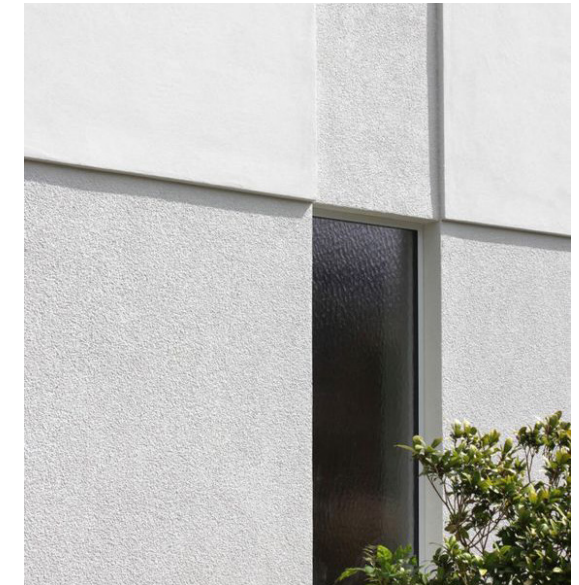
A lighter colour stone is proposed to window sills and lintels to create relief and reference the nearby stonework of the viaduct.

Glazed tile linings are employed to enhance and emphasise entrance areas.

Balconies have been proposed with a similar render finish so as to feel integral to the building mass and form rather than bolt on elements.

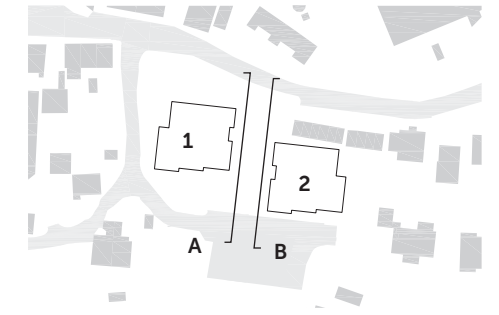
MATERIAL COLOUR

Colour has been carefully considered as part of the design process. An earthy green tone is proposed to create a natural-looking palette that softens the buildings within the wider landscape whilst adding vibrancy to the site and referencing homes nearby that incorporate rendered finishes with accent colours.



7.0 EXTERNAL MATERIALS AND ENVELOPE

ILLUSTRATIVE ELEVATIONS



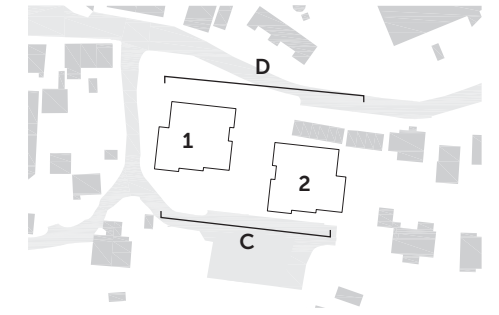
BLOCK 01 - EAST ELEVATION (A)



BLOCK 02 - WEST ELEVATION (B)

7.0 EXTERNAL MATERIALS AND ENVELOPE

ILLUSTRATIVE ELEVATIONS



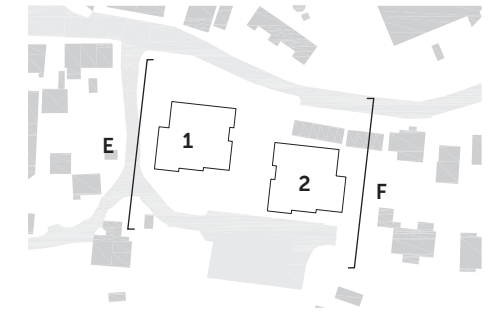
SOUTH ELEVATION (C)



NORTH ELEVATION (D)

7.0 EXTERNAL MATERIALS AND ENVELOPE

ILLUSTRATIVE ELEVATIONS



BLOCK 01 - WEST ELEVATION (E)



BLOCK 02 - EAST ELEVATION (F)

8.0 ILLUSTRATIVE VIEWS

8.0 ILLUSTRATIVE VIEWS

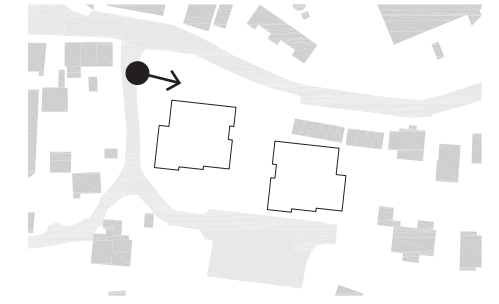
VIEW ALONG PONTYCAPEL ROAD



Sketch view looking east along Pontycapel Road. Unlike the existing building the new proposal is set back from the road.

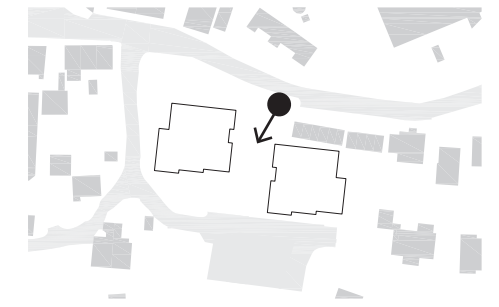
8.0 ILLUSTRATIVE VIEWS

APPROACH FROM WERN ROAD



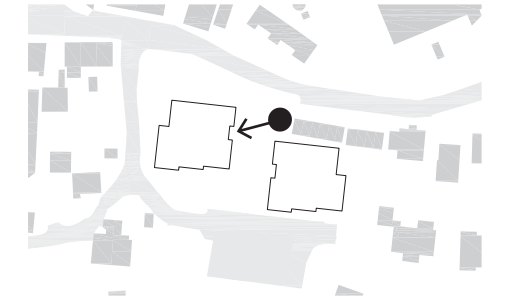
8.0 ILLUSTRATIVE VIEWS

VIEW OF LANDSCAPE BETWEEN BLOCKS



Sketch view looking into the central gardens from the top of the site at Pontycapel Road. The spacing of the buildings provides a route and views to the valley. Entrances to homes will open onto the gardens.

8.0 ILLUSTRATIVE VIEWS ENTRANCE APPROACH



Sketch view showing the garden and entrances to the homes.
Ramped and stepped routes are provided to ensure the homes
are accessible for all.

8.0 ILLUSTRATIVE VIEWS

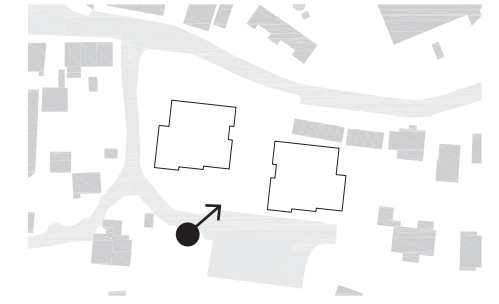
VIEW FROM PENNYWERN COTTAGES



Sketch view looking between houses at the bottom of Wern Road. The top floor of each block is set back to reduce the perceived massing scale.

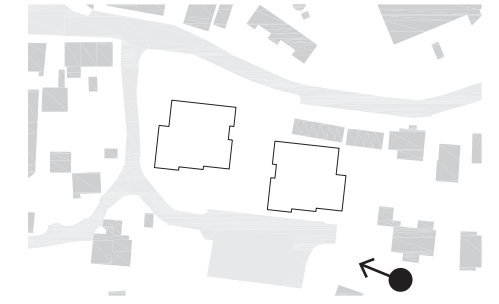
8.0 ILLUSTRATIVE VIEWS

VIEW FROM SOUTHERN PARKING AREA



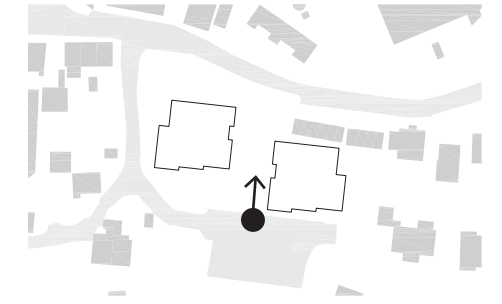
8.0 ILLUSTRATIVE VIEWS

VIEW FROM CANBERRA HOUSE



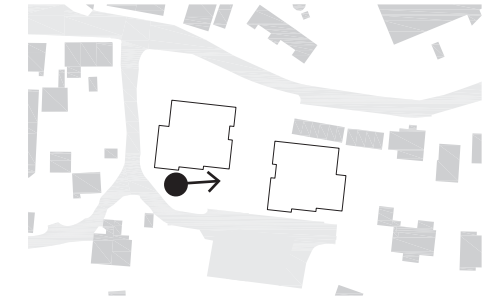
Sketch view looking from the east. The buildings are set back from the boundaries and are stepped in profile to provide a better relationship to neighbouring buildings.

8.0 ILLUSTRATIVE VIEWS STEPPED LANDSCAPE



Sketch view looking up from the car parking at the bottom of the site at Wern Road.

8.0 ILLUSTRATIVE VIEWS ENTRANCES AND PATHWAYS



Sketch view from within the site looking east towards to central garden. Sloped paths take a longer route to provide an accessible gradient. Pathway to the entrances passes private amenity space.

8.0 ILLUSTRATIVE VIEWS FROM VIADUCT - EXISTING



8.0 ILLUSTRATIVE VIEWS FROM VIADUCT - PROPOSAL



9.0 LANDSCAPE

9.0 LANDSCAPE

LANDSCAPE CONCEPT

BUILDINGS WITHIN A LANDSCAPE

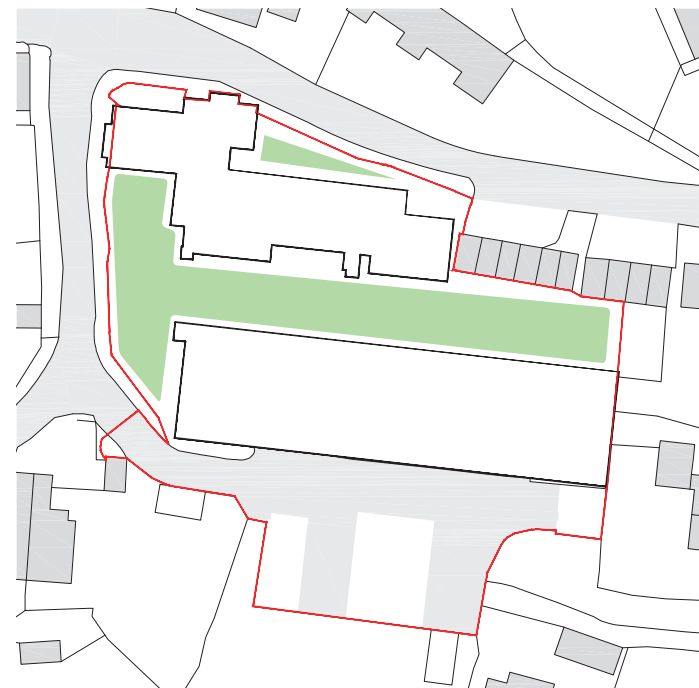
By reducing the building footprint on the site the landscape area has increased and become an integral part of the overall design.

The ambition is to give the sense that the buildings sit within a landscape where they previously filled it.

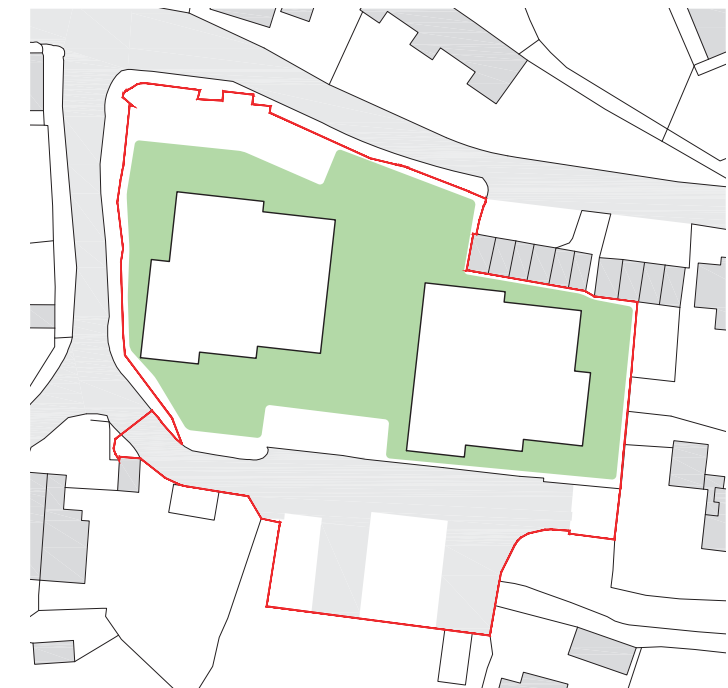
The central landscape between the blocks is significant in creating views through the site, connecting residents and shaping the experience of entering home.



Sketch of central landscape



Existing landscape and building footprint



Proposed landscape and building footprint

9.0 LANDSCAPE

LANDSCAPE STRATEGY

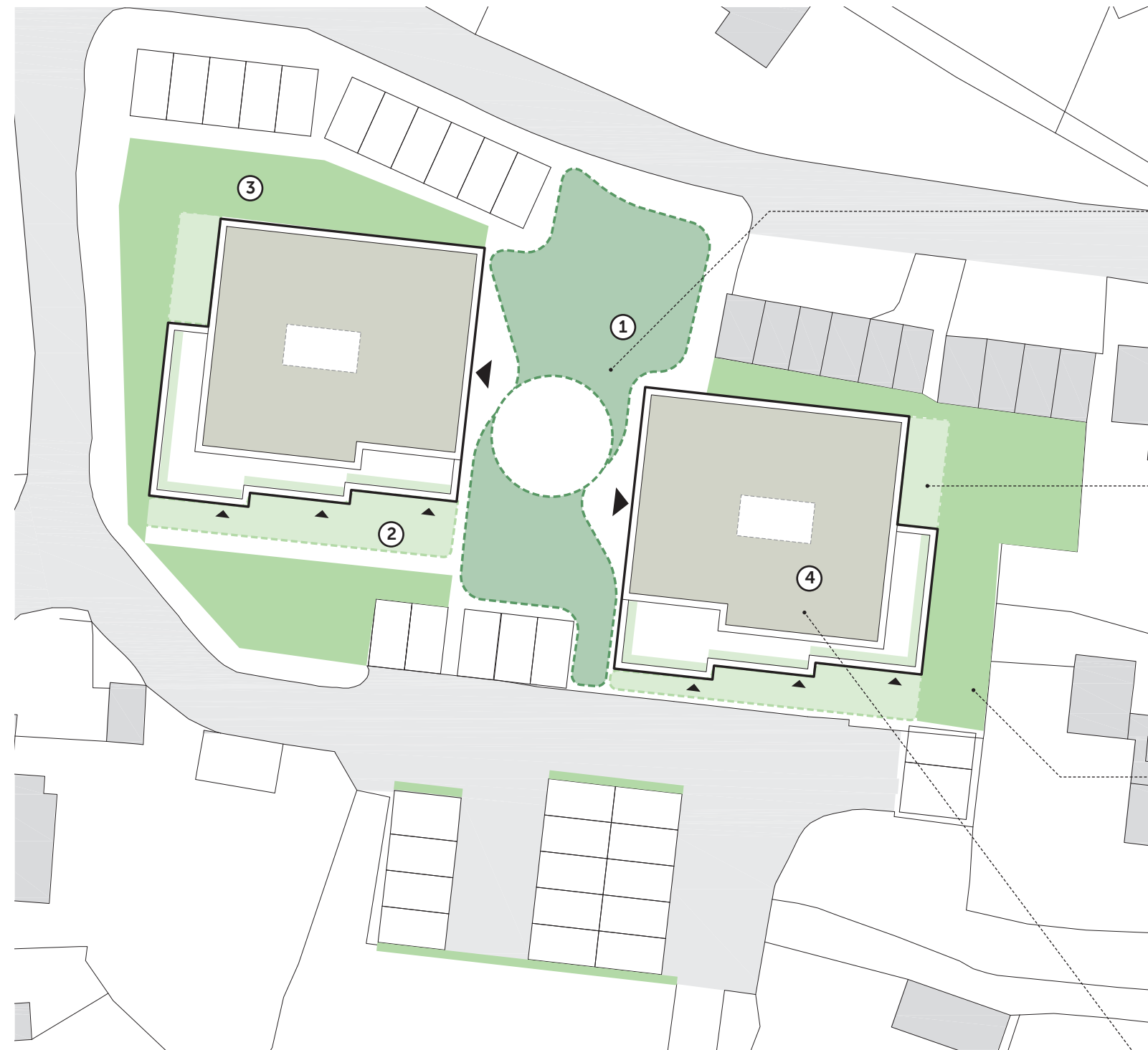
LANDSCAPE CHARACTER ZONES

Our key aim for the landscape is to provide an enhancement to the public realm and create a safe, secure and comfortable environment.

Our landscape strategy works hard to resolve the steep gradients and level changes across the site to provide landscape and routes which are accessible for all.

The strategy will provide a landscape improves biodiversity while keeping the on-going management to a minimum. The landscape design strategy has 4 key elements:

- 01 - Communal Landscape
- 02 - Private Gardens & Terraces
- 03 - Boundary Spaces
- 04 - Green Roof



01 Central Communal Landscape



02 Private Gardens & Terraces



03 Boundary Spaces



04 Green Roof

9.0 LANDSCAPE COMMUNAL GARDEN

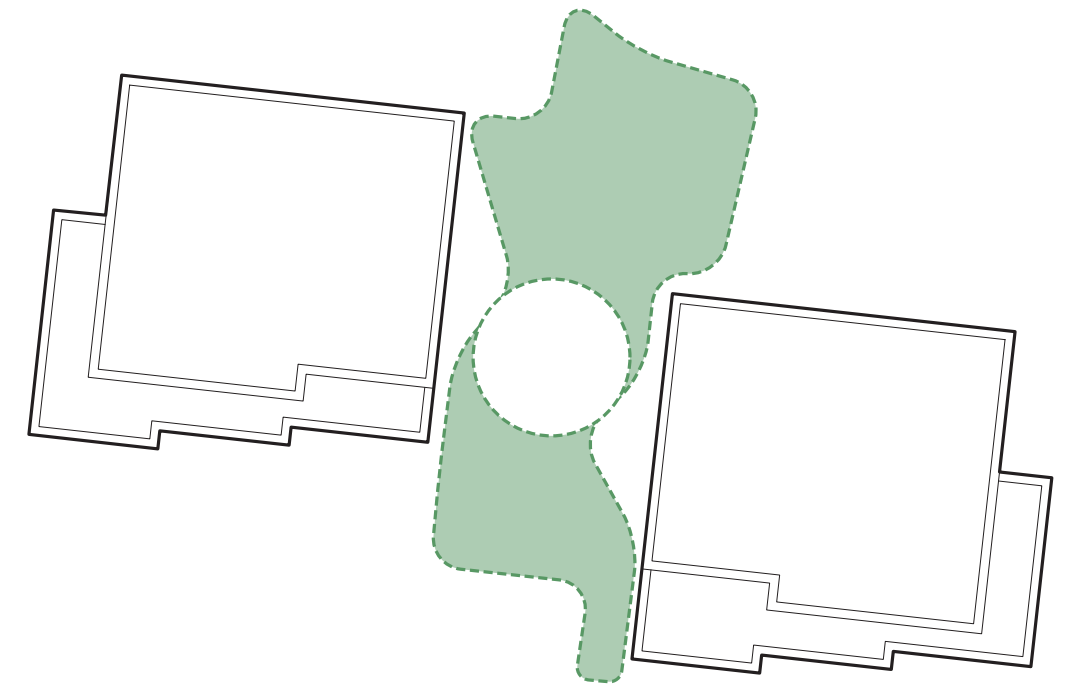
01 Central Communal Landscape



Communal garden between blocks that connects North/South. Tree lined with denser planting whilst incorporating accessible pathways and stepped access

Central space / glade for residents that connects main entrances to each block provides a small seating area with feature landscape

Potential to incorporate localised areas for community interaction like raised grow beds or herb gardens etc.

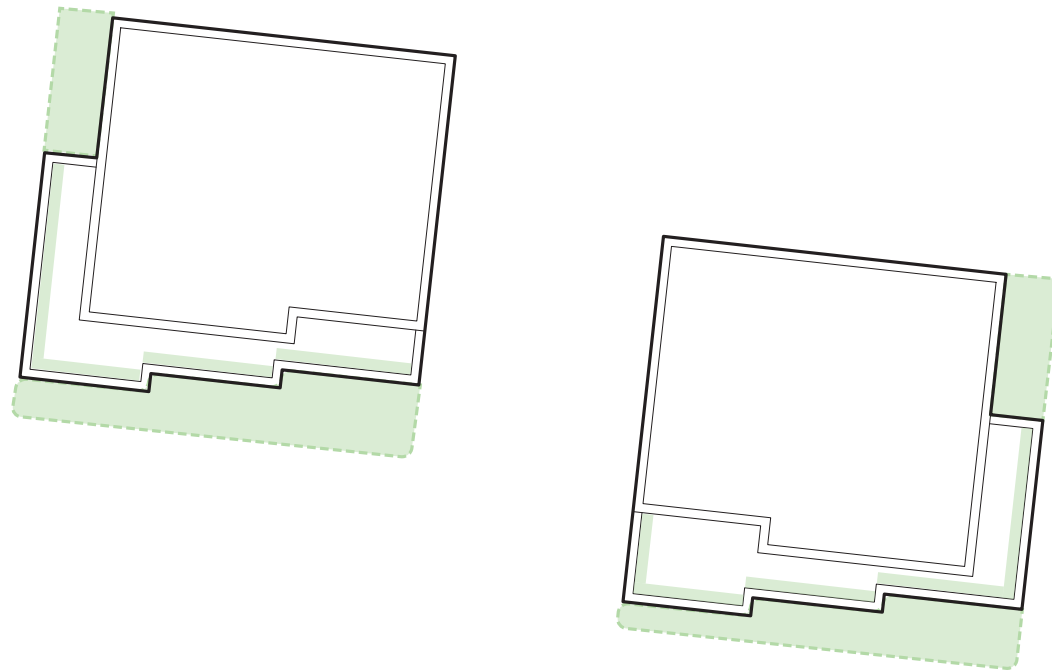


9.0 LANDSCAPE

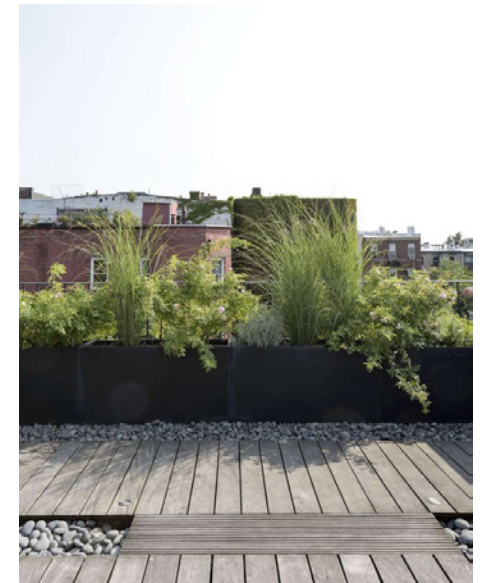
PRIVATE GARDENS / TERRACES

Private gardens to ground floor apartments that provide access to individual front doors and extend the building threshold helping to active the ground plane and building perimeter

The stepped massing creates natural boundaries for private terraces at grade that can integrate planters to give a sense of ownership and privacy.



02 Private Gardens / Terraces



9.0 LANDSCAPE BOUNDARY AREAS AND ROOF

03 Boundary spaces



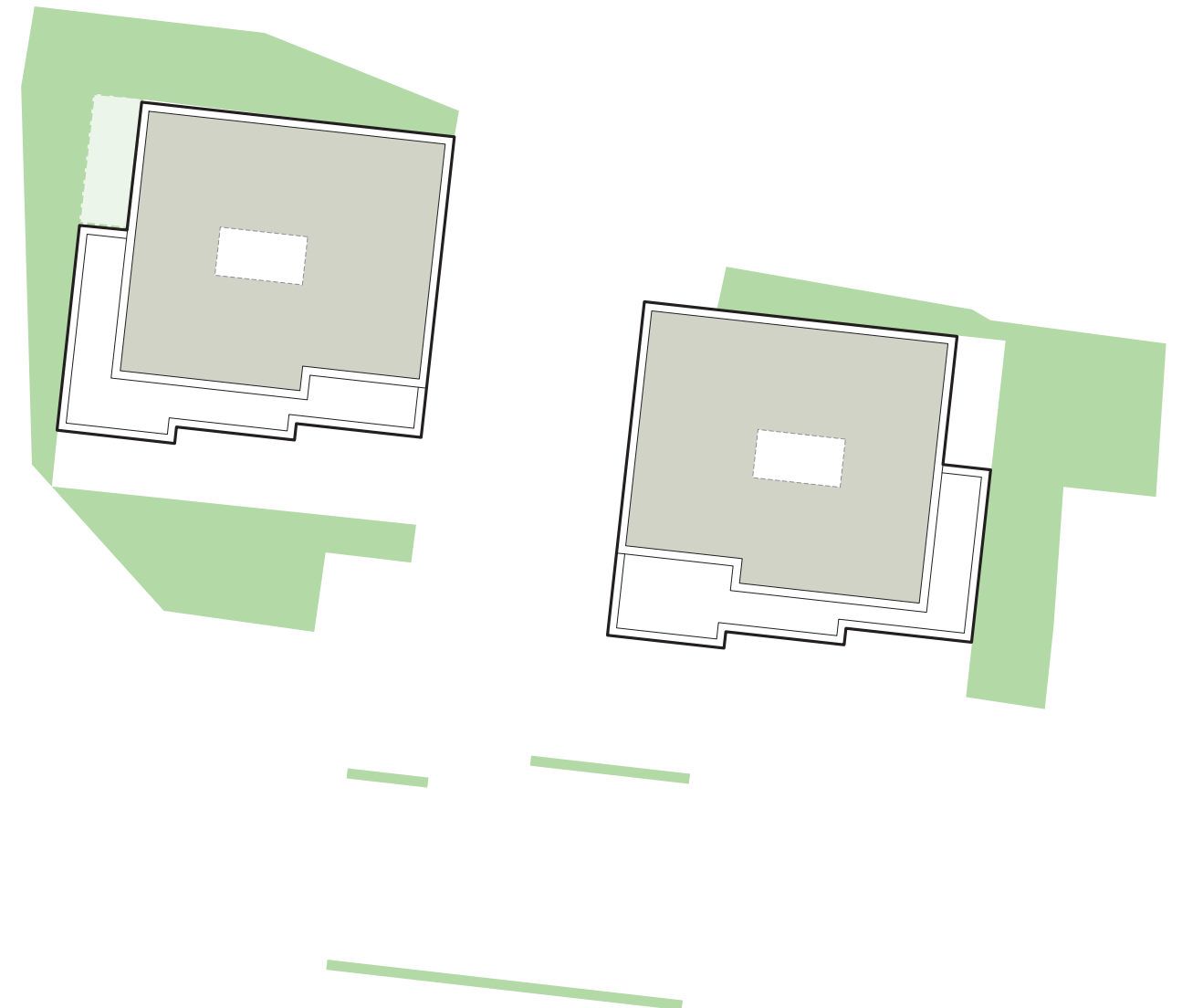
04 Green roof



Boundary areas integrate simple, low maintenance planting to create a setting where the buildings sit within a landscape and emphasise the move to set buildings back from the site edges.

These areas help lead people into the development, control views and sight-lines, soften edges and provide screening

Roof areas integrate a biodiverse green roof finish to enhance views over and across development



COFFEY / ARCHITECTS 