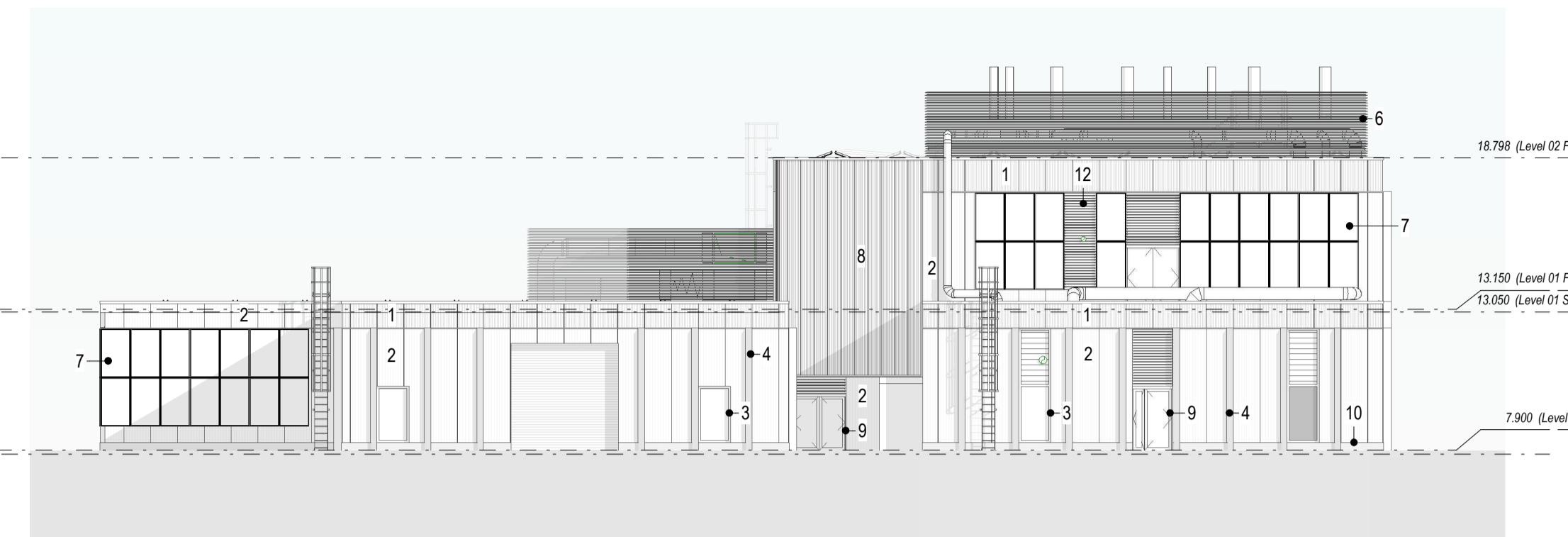
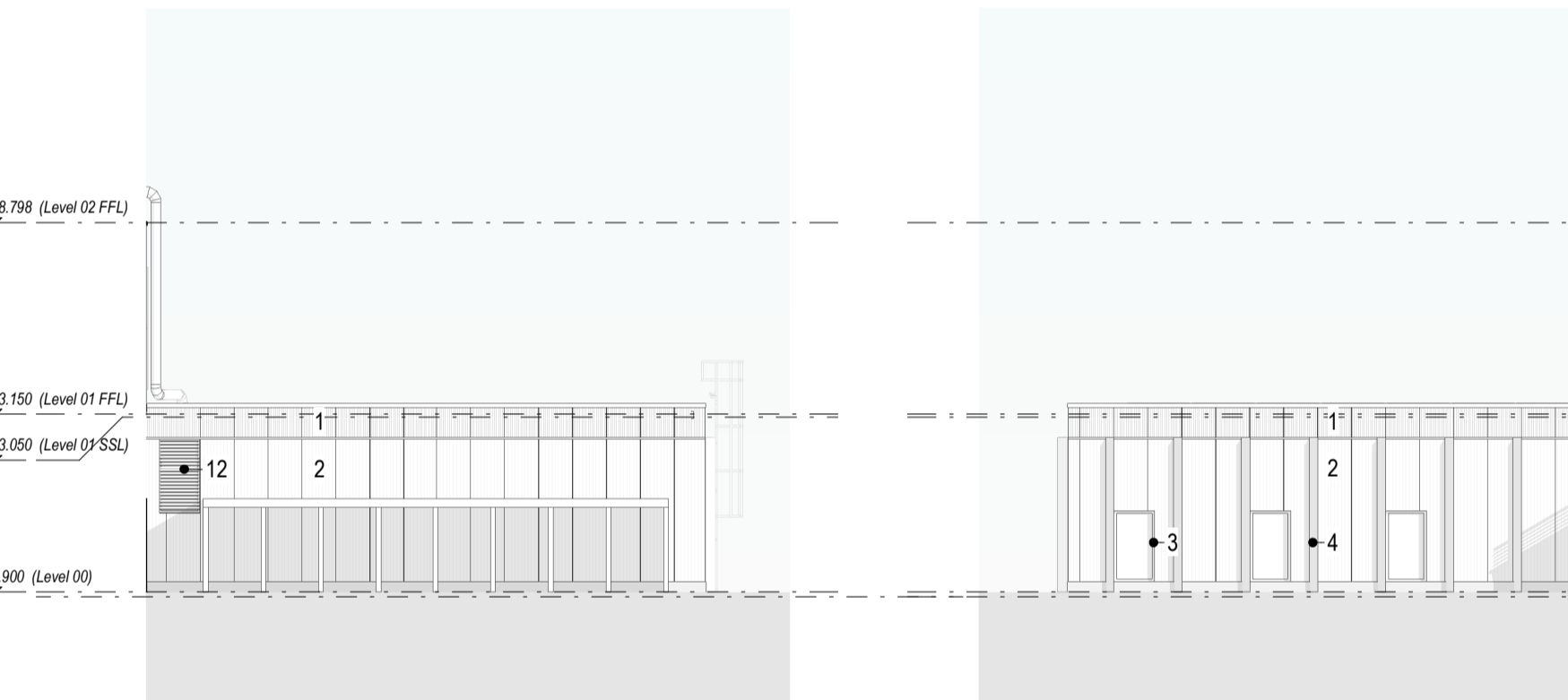


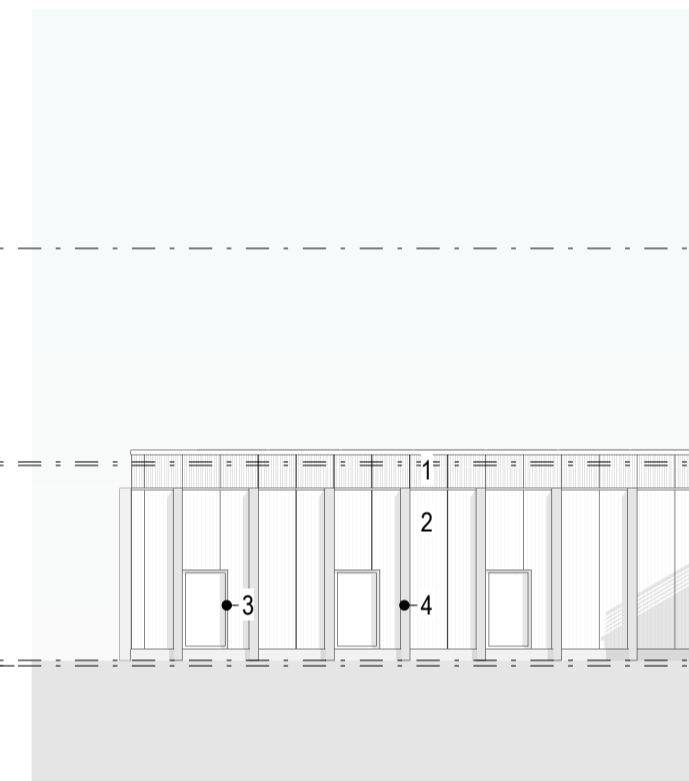
Elevation - East
1 : 200



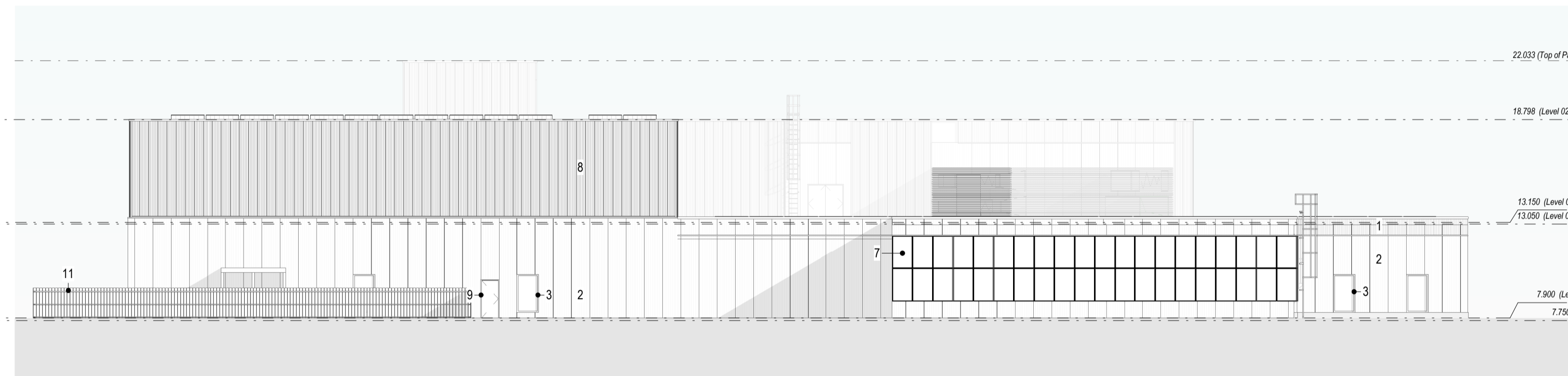
Elevation - South
1 : 200



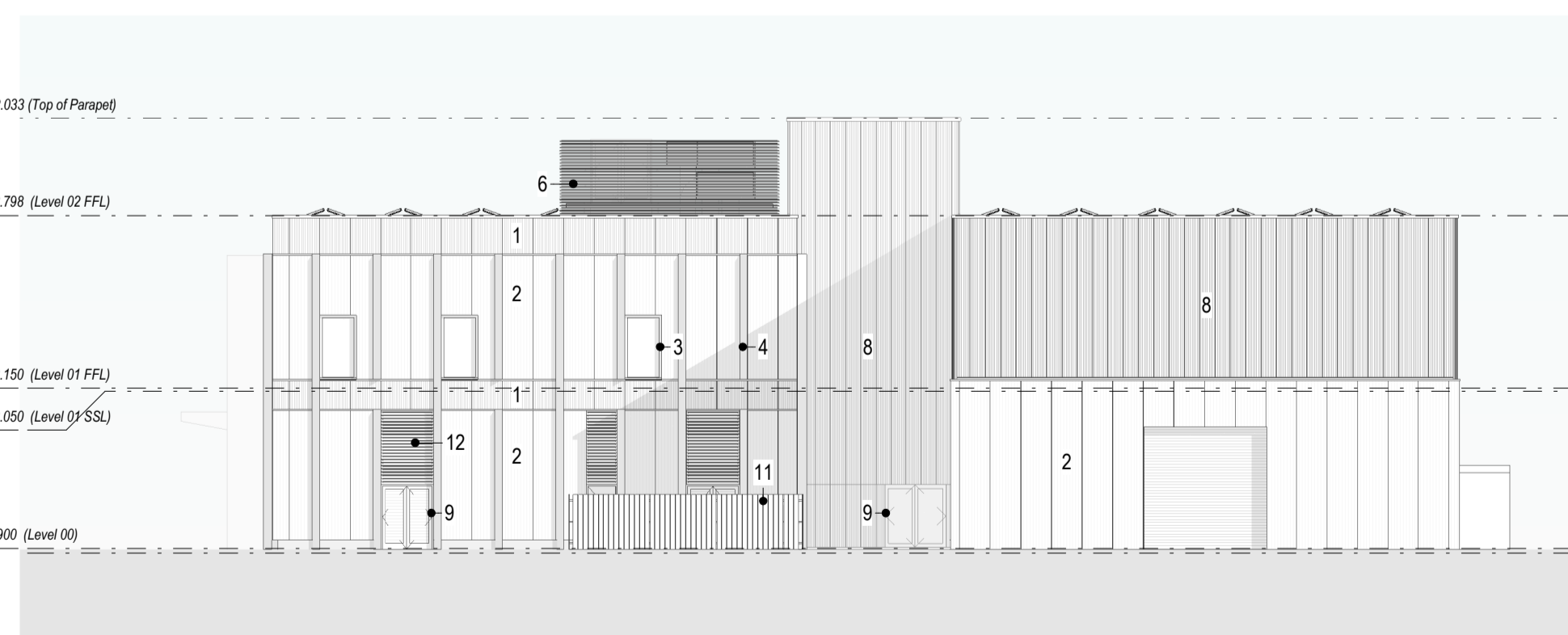
Elevation - South 1
1 : 200



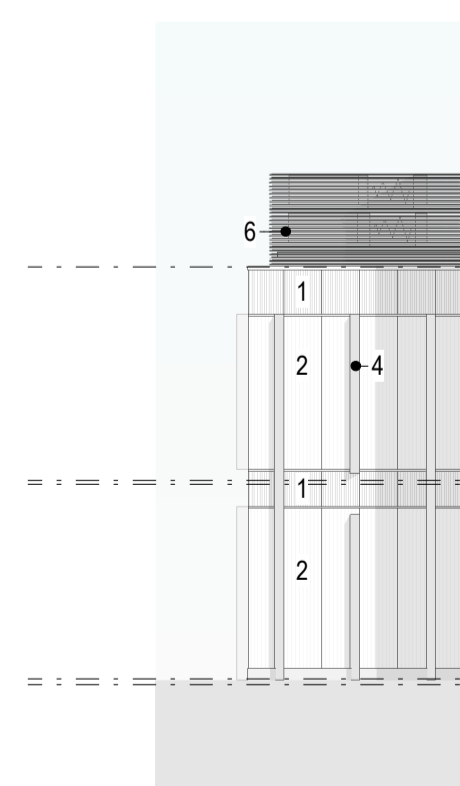
Elevation - South 2
1 : 200



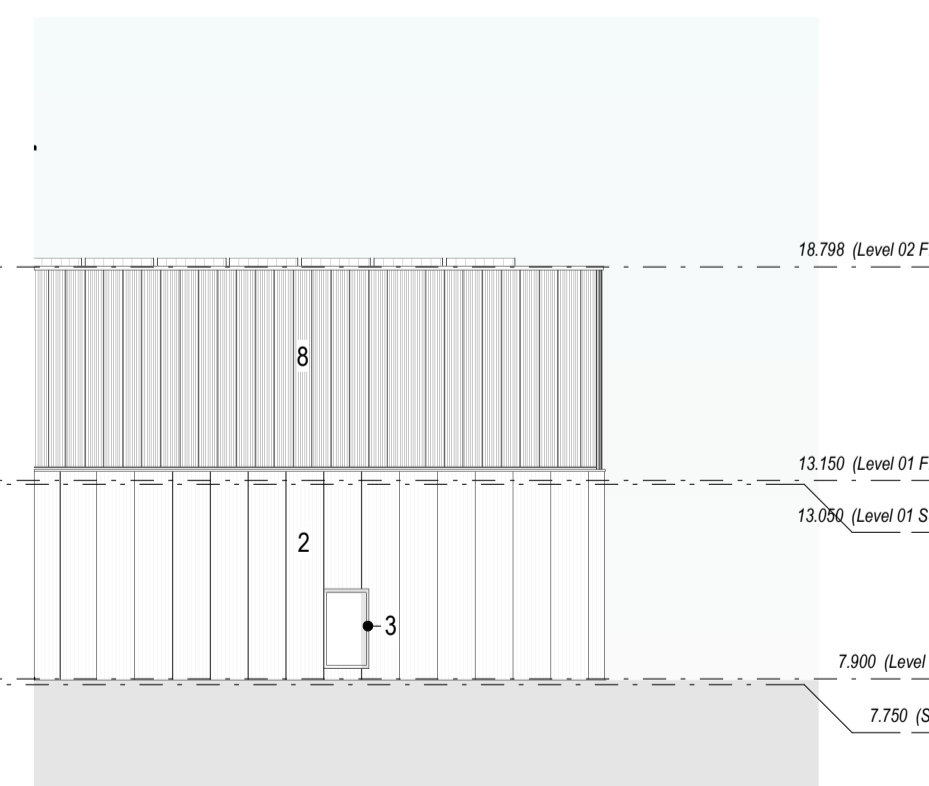
Elevation - West
1 : 200



Elevation - North
1 : 200



Elevation - North 1
1 : 200



Elevation - North 2
1 : 200

Notes:

- This drawing is copyright.
- Do not scale dimensions from this drawing.
- This drawing is to be read in conjunction with all other relevant drawings. All discrepancies on this drawing are to be reported to the architect.
- Do not modify any element of this drawing.
- Use drawing only for purpose(s) issued.
- This drawing may contain colour.

Scale Bar
0 2m 6m 10m
Scale: 1:200

Key Plan
West
North
South
East

Hazard
1
To warn of significant hazards or information that is unusual
To be read in conjunction with all other consultant's information
Refer to CDM Schedule XXXX-IB-WB-XX-SC-A-572-0010

The following external model files are included within this drawing:

- Material Key**
- Vertical metal cladding panels, ribbed texture, dark in colour. (Refer to 3D images for indicative finish and spacing).
 - Vertical metal cladding panels, panelled texture, dark in colour. (Refer to 3D images for indicative finish and spacing).
 - Polyester Powder Coated aluminium window frames and curtain walling, dark colour, final RAL to be confirmed. Include for glazed, blanking or louvred panels. (Refer to 3D images for indicative finish and spacing).
 - Folded Metal Feature Fins, multicoloured, final RAL's to be confirmed. (Refer to 3D images for indicative finish and spacing).
 - Folded Metal Entrance Surround and Canopy, final RAL to be confirmed.
 - Louvred Plant Screen. RAL to be confirmed.
 - Facade mounted PV panels, fixed to external wall panels, fixed to structure. (Refer to 3D images for indicative finish and spacing).
 - Polycarbonate Translucent Panels. Final finish to be confirmed. (Refer to 3D images for indicative finish and spacing).
 - Polyester Powder Coated Aluminium door frames, dark colour, final RAL to be confirmed. Include for glazed or louvred panels. (Refer to 3D images for indicative finish and spacing).
 - Brick plinth, stretcher bond, colour to be confirmed.
 - Vertical hit and miss treated timber cladding, dark in colour, colour to be confirmed. Timber structure support to be exposed.
 - Louvre Panel, dark colour, RAL to be confirmed.

P01	04/03/2024	Issue for PAC	AP	AS
Rev	Date	Revision Notes	Drawn	Reviewed



Project
SWITCH Harbourside

Drawing Title
Proposed Elevations

Job Number 143606	Date 24/02/07	Security Classification	Drawn By AP
Scale@A1 As indicated	Purpose Planning	Reviewed By AS	
Drawing Number 26CB02-ARC-32-XX-D-A-200110	Revision P01	Subsidiary	