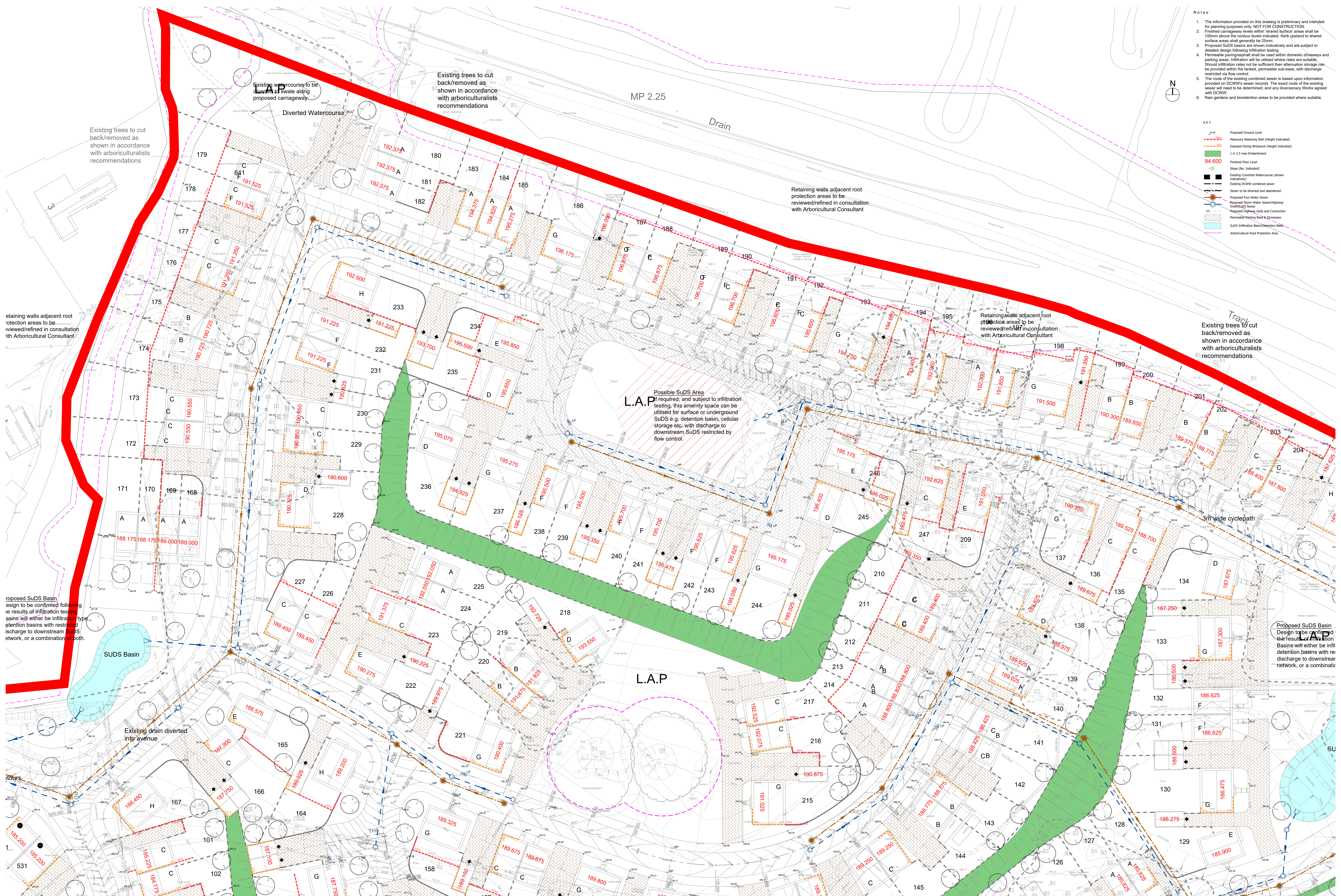


- Notes:**
- The information provided on this drawing is preliminary and intended for planning purposes only. NOT FOR CONSTRUCTION.
 - Finished carriageway levels within 'shared surface' areas shall be 100mm above the contour levels indicated. Kerb upstand to shared surface areas shall generally be 25mm.
 - Proposed SuDS basins are shown indicatively and are subject to detailed design following infiltration testing.
 - Permeable paving/asphalt shall be used within domestic driveways and parking areas. Infiltration will be utilised where rates are suitable. Should infiltration rates not be sufficient then attenuation storage can be provided within the tanked, permeable sub-base, with discharge restricted via flow control.
 - The route of the existing combined sewer is based upon information provided on DCWW's sewer records. The exact route of the existing sewer will need to be determined, and any diversionary Works agreed with DCWW.
 - Rain gardens and bioretention areas to be provided where suitable.

- KEY**
- Proposed Ground Level
 - Masonry Retaining Wall (Height Indicated)
 - Exposed Facing Brickwork (Height Indicated)
 - 1 in 2.5 max Embankment
 - Finished Floor Level
 - Steps (No. Indicated)
 - Existing Culverted Watercourse (shown indicatively)
 - Existing DCWW combined sewer
 - Sewer to be diverted and abandoned
 - Proposed Foul Water Sewer
 - Proposed Storm Water Sewer/Highway Drain/SuDS Sewer
 - Proposed Highway Gully and Connection
 - Permeable Paving Bays & Driveways
 - SuDS Infiltration Basin/Retention Basin
 - Arboricultural Root Protection Area



Proposed SuDS Basin design to be confirmed following the results of infiltration testing. Basins will either be infiltration type, retention basins with restricted discharge to downstream SuDS network, or a combination of both.

Proposed SuDS Basin design to be confirmed following the results of infiltration testing. Basins will either be infiltration type, retention basins with restricted discharge to downstream network, or a combination of both.

This drawing is copyright and its use or reproduction without the permission of Spring Design Consultancy Limited. All rights are reserved until invoices are paid in full. No responsibility will be taken for any design used for construction prior to receipt of relevant approvals.

rev	date	description	by	rev	date	description	by
A	May 2023	Site layout updated: Engineering revised to suit: Sketch drainage layout added	RMJ				
B	Aug 2023	Site layout updated to suit Tree Survey. Engineering revised to suit. RMJ	RMJ				

Status: **SKETCH**

Drawn: RMJ
Checked: RMJ
Date: April 2023
Scale: 1:250

Client: ASD Build Limited
Project: Moss Place, Abernant
Title: Sketch Engineering Layout - 1: 250 - 3 of 4
Ref: 2696-505-3
Rev: B

