

# ADEILAD NEWYDD YN LLE YSGOL GYNRADD: MYNYDD CYNFFIG

## A NEW BUILD REPLACEMENT PRIMARY SCHOOL: MYNYDD CYNFFIG



### GEFNDIR Y DATBLYGIAD:

Drwy drawsnewid y ddarpariaeth addysgu a thrwy ei rhaglen Cymunedau Dysgu Cynaliadwy, mae Llywodraeth Cymru wedi blaenoriaethu moderneiddio'r dysgu a chyflwyno ar draws Cymru, er mwyn sicrhau ei fod yn gweithiol ac yn effeithlon. Y nod yw sicrhau trawsnewid ar draws y system er budd plant, pobl ifanc ac oedolion ar gyfer dysgu a'r bwriad yw cyflwyno'r cyfleoedd dysgu o'r ansawdd uchaf i bawb.

Ar hyn o bryd, mae Ysgol Gynradd Mynydd Cynffig yn rhan o drefniant lle mae'r safle'n cael ei rannu; mae'r babanod wedi'u lleoli 0.5km i ffwrdd tua'r dwyrain, ger Commercial Street. Yn yr ysgol lau, a adeiladwyd dros 100 o flynyddoedd yn ôl, nid oes ystafelloedd dosbarth sy'n ddigon mawr er mwyn cyflwyno cwricwlwm cyfoes gyda 30 o ddisgyblion ym mhob dosbarth.

Er mwyn cyflwyno cwricwlwm cyfoes yn effeithiol, mae'n hanfodol bod yr ysgol â'i safle ei hun mewn adeilad a ddyluniwyd yn benodol ar gyfer yr ysgol. Bydd y buddsoddiad ym Mynydd Cynffig yn sicrhau darpariaeth addysg o ansawdd uchel i ddysgwyr ac athrawon, sy'n cyfateb i'r gofynion cyfredol ar gyfer cyflwyno cwricwlwm. Mae Estyn (yr arolygiaeth addysg yng Nghymru) yn nodi bod "gwelliannau yn ansawdd adeiladau yn effeithio'n gadarnhaol iawn ar ansawdd yr addysgu yn ogystal â morâl staff sydd yn ei dro yn effeithio'n gadarnhaol ar berfformiad disgyblion".

Mae'r project, dan arweiniad y Tim Projectau Mawr mewnol y cyngor mewn ynghyd â'r Tim Moderneiddio Ysgolion, yn gynnig cyffrous ar gyfer adeilad a chynllun yr Ysgol Gynradd, gan ganolbwyntio'n benodol ar berfformiad ynni'r adeilad newydd yn ogystal â gwerth cymdeithasol a'r manteision i'r gymuned a fydd yn codi o ganlyniad i'r project. Mae'r Ddeddf Llesiant Cenedlaethau'r Dyfodol (2015) yn gynhenid i'r cynigion datblygu. Bwriad y ddeddf yw gwella llesiant cymdeithasol, economaidd, amgylcheddol a diwylliannol Cymru a bydd y project fel cyfanrwydd yn gwirredu buddsoddiad sylweddol ym mhentref Mynydd Cynffig.

<b>420</b> DISGYBLION (5 i 11 Oed)	<b>75</b> LLEOEDD MEITHRIN
<b>25</b> STANDARD PARKING SPACES	<b>4</b> ELECTRIC VEHICLE CHARGING SPACES
	<b>2</b> ACCESSIBLE SPACES

### DEVELOPMENT BACKGROUND:

The Welsh Government through its transformation of education provision and **Sustainable Communities for Learning** programme has prioritised the modernisation of learning and delivery across Wales, so that it works efficiently and effectively. The aim is transformation across the system to benefit children, young people and adults for learning. The intention is to deliver the highest quality learning opportunities for all.

Mynydd Cynffig Primary School currently operates over a split site arrangement; The Infants is located 0.5km away off Commercial Street, to the East. The infant Classrooms are temporary demountable buildings. The Junior school, constructed over 100 years ago, does not have classrooms of a sufficient size to facilitate a 21st century curriculum with 30 pupils per class.

In order to deliver a modern curriculum effectively, it is imperative that the school operates entirely on one site in a modern purpose designed building. The investment at Mynydd Cynffig will provide learners and teachers with a high quality educational provision, commensurate with current requirements for curriculum delivery. Estyn (the education inspectorate for Wales) note that "improvements in the quality of buildings have a very beneficial effect on the quality of teaching and morale of staff which has a positive effect on pupil performance".

The project, led by the council's 'In-House' Major Projects Team in conjunction with the School Modernisation Team, is an exciting proposal for the new Primary School building and masterplan, with a particular focus on the energy performance of the new building and the social value and community benefits that will arise from the project. Intrinsic to the development proposals is the Well-being of Future Generations Act (2015), that seeks to improve the social, economic, environmental and cultural well-being of Wales and the project as a whole will realise a significant investment within the village of Kenfig Hill.

<b>420</b> PUPILS (Ages 5 to 11)	<b>75</b> NURSERY PLACES
<b>25</b> STANDARD PARKING SPACES	<b>4</b> ELECTRIC VEHICLE CHARGING SPACES
	<b>2</b> ACCESSIBLE SPACES

VIEW: LOOKING NORTH

GOLWG: EDRYCH TUA'R GOGLEDD

VIEW: LOOKING WEST

GOLWG: EDRYCH TUA'R GORLLEWIN



# YMDRIN A'R ANGHENION A'R HERIAU PRESENNOL

## ADDRESSING EXISTING NEEDS & CHALLENGES



AERIAL IMAGE

DELWEDD O'R AWYR

TOPOGRAPHICAL SURVEY

AROLWG TOPOGRAFFIG



### HERIAU:

Mae ambell i her a chyfyngiad sylweddol yn gysylltiedig â'r safle presennol ac mae hynny wedi effeithio ar y strategaeth ddylunio:

- Lefelau'r Safle
- Adeilad Presennol yr Ysgol
- Rhandiroedd Presennol
- Parc Presennol
- Cyfleuster Hyfforddiant Awyrennau Corps (ATC)
- Ecoleg (Rhywogaethau Gwarchoddedig)

Mae'r safle'n goleddu dros 7m o gyfeiriad y gogledd-ddwyrain i lawr i'r de-orllewin. Mae rhai ardaloedd wedi'u gwahanu gan furiau cynnal neu gloddiau serth.

Mae adeilad presennol yr ysgol wedi'i leoli ym mhrif ran y safle ac mae'n rhaid iddo aros yn ei le ac yn weithredol nes bod yr adeilad newydd yn barod.

Mae'r rhandir presennol yn agwedd bwysig ar fywyd cymunedol. Mae'n hanfodol dal gafael ar hynny. Mae ei leoliad cyfredol yn cyfyngu ar ddatblygu'r ysgol a byddai'n fwy addas wedi'i leoli tua'r gogledd i'r safle, gan sicrhau bod yr ysgol â'r Safle o Bwysigrwydd i Gadwraeth Natur. Bydd ailddatblygu'r Rhandiroedd yn gyfle i greu cylchrediad mwy hygyrch drwy'r plotiau a dull mwy unfurf i gynllun y plot.

Mae'r parc presennol yn ffurfio llwyfandir ar lefel rhwng yr ysgol bresennol a'r ATC. Mae'r parc yn aros i gael ei ailwampio dros y blynyddoedd nesaf ac mae'r datblygiad yn cynrychioli cyfle er mwyn gwneud gwelliannau ynghyd â chaniatáu ar gyfer rhywfaint o adleoli i ymdopi â'r newidiadau cysylltiedig o ran lefel.

Mae'r brydles ar gyfer yr ATC wedi dod i ben ac mae'r sefydliad wedi penderfynu adleoli i rywle arall, ar ôl ymgynghoriad i esbonio'r strategaeth ar gyfer datblygiad newydd i'r ysgol. Cynigiwyd i'r sefydliad ATC ddefnyddio tiroedd yr ysgol a neuadd yr ysgol.

Tua'r gogledd i'r safle mae Safle o Bwysigrwydd i Gadwraeth Natur. Mae'r datblygiad wedi osgoi'r ardal hwn fodd bynnag, mae cynefinoedd tebyg yn ymestyn i safle'r datblygiad. Mae risg y bydd pathewod (*dormice*) o fewn y cynefin sy'n cysylltu â'r Safle o Bwysigrwydd i Gadwraeth Natur ac mae tystiolaeth o nadroedd defaid (*slow worms*) yn ardal y Rhandir. Mae'r Ecolegydd wedi amlinellu'r mesurau lliniaru y bydd angen iddynt fod ar waith, ac mae'r cynigion ar gyfer y rhain wedi'u cynnwys yn nogaennau'r cais. Defnydd cyfyngedig sydd i'r safle presennol yn y gymuned ac mae wedi dyddio. Mae'r datblygiad yn ceisio gwella hyn drwy gynnwys Meysydd Pob Tywydd, Ystafell Gymunedol gyda Neuadd, ynghyd ag ailddatblygu'r Rhandiroedd.

### CHALLENGES:

The existing site has some significant challenges and constraints which has affected the strategy for design:

- Site Levels
- Existing School Building
- Existing Allotments
- Existing Park
- Existing Air Training Corps Facility (ATC)
- Ecology (Protected Species)

The site slopes by over 7M from the North East down to the South West. Some areas are separated by retaining walls or steep banks.

The existing school building occupies the prime location on the site and must remain in place and in operation until the new building is ready.

The existing allotment being an important aspect of community life is a vital element to retain. Its current location restricts the school development and is better suited to being located to the North of the site creating separation between the school and the SINC. The redevelopment of the Allotments provides an opportunity to create a more accessible circulation core through the plots and a more uniform approach to plot layout.

The existing park forms a plateau at a level between the current school and ATC. The park is scheduled for a refurbishment within the next few years and the development provides an opportunity for improvements to be made along with allowing a slight repositioning to deal with the associated level changes.

The lease for the ATC has expired and the organisation has chosen to relocate elsewhere, following a consultation to explain the strategy for the new school development. The ATC organisation has been offered the use of the school grounds and hall space.

To the North of the site lies a SINC (Site of Importance for Nature Conservation). The development has avoided this designated area however, similar habitat extends into the development site. There is a risk of Dormice being located within the habitat that links with the SINC and there is evidence of Slow Worm activity within the Allotment area. The Ecologist has outlined the required mitigation that will need to take place, the proposals of which are included within the application documents.

The existing site has limited and out dated community use, which the development seeks to improve and enhance with the inclusion of All Weather Pitches, Community Room with Hall use, along with the redeveloped Allotments.



VIEW LOOKING NORTH

GOLWG EDRYCH TUA'R GOGLEDD



VIEW LOOKING NORTH

GOLWG EDRYCH TUA'R GOGLEDD



VIEW LOOKING SOUTH WEST

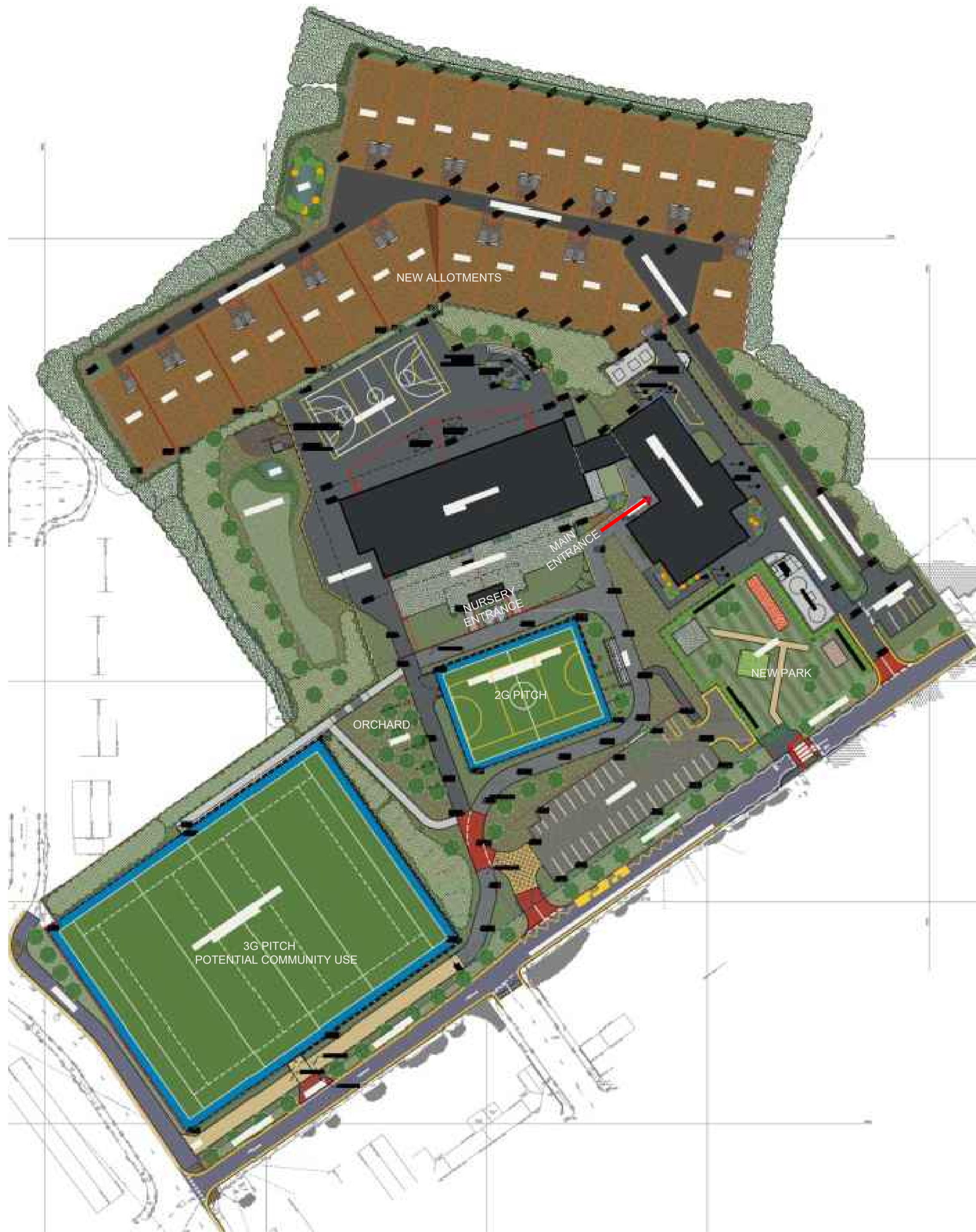
GOLWG EDRYCH I'R DE ORLLEWIN



VIEW LOOKING SOUTH WEST

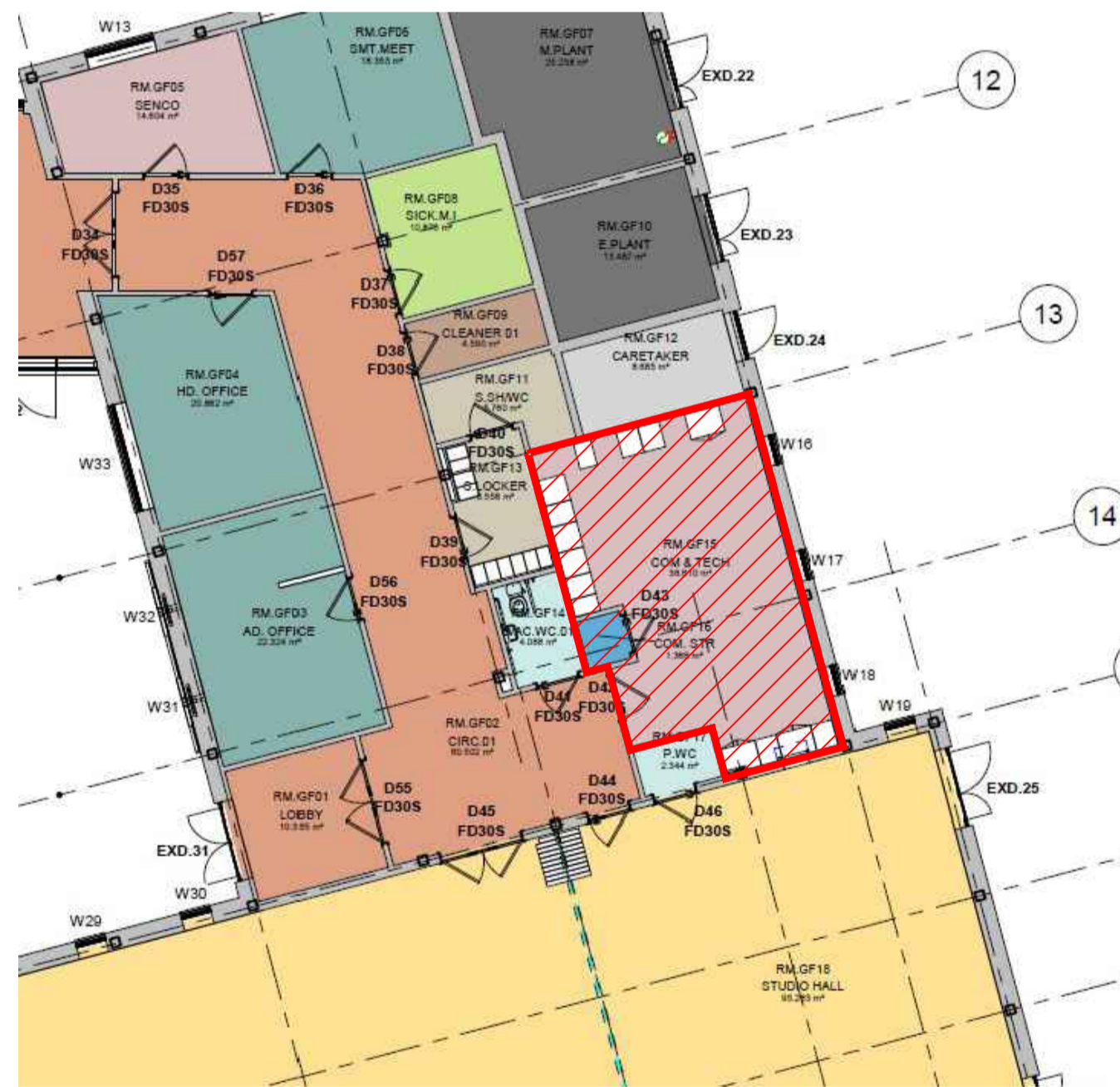
GOLWG EDRYCH I'R DE ORLLEWIN

# Y SAFLE, Y GYMUNED A HAMDDEN THE SITE, COMMUNITY & RECREATION



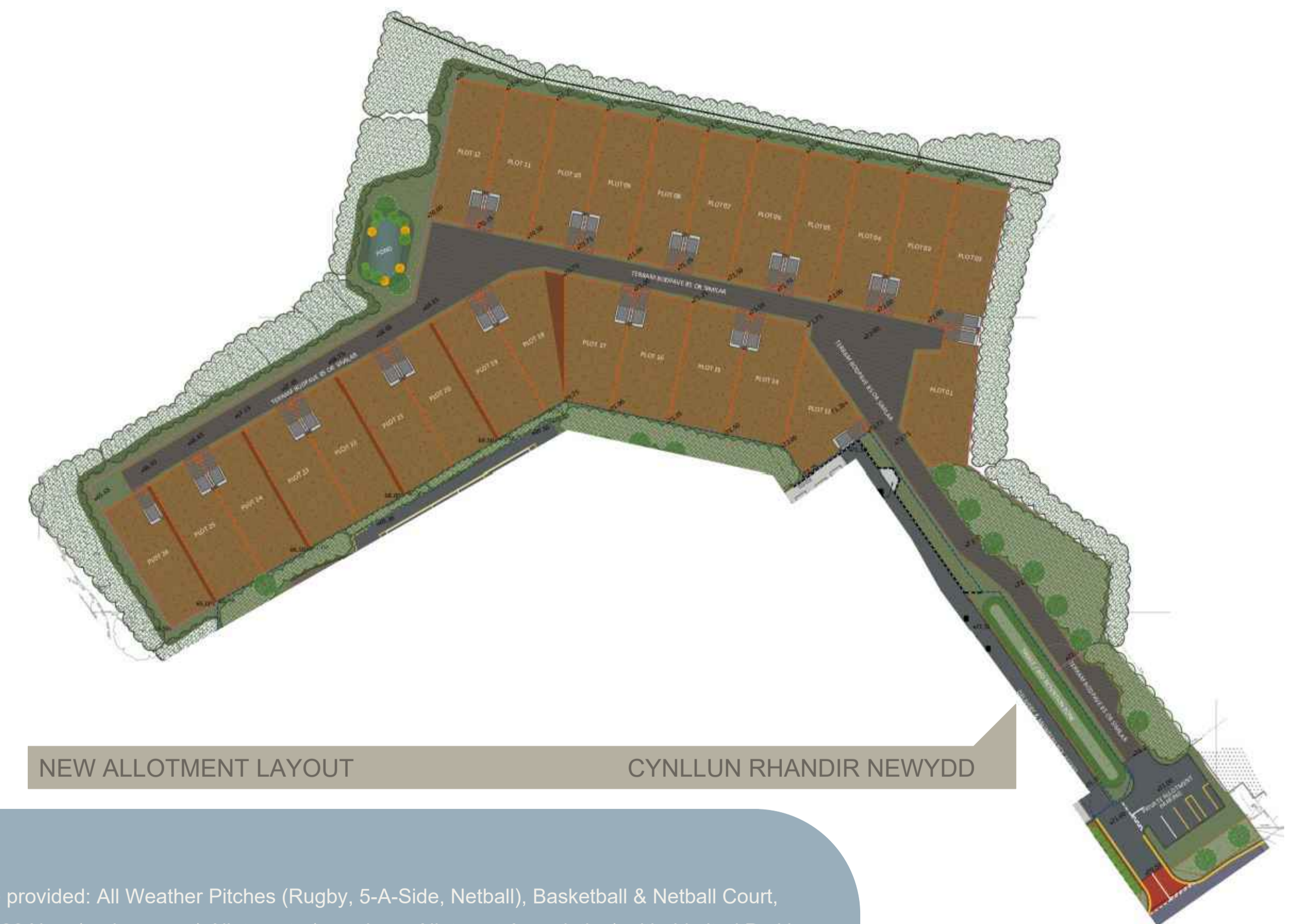
PROPOSED SITE LAYOUT

GOSODIAD SAFLE ARFAETHEDIG



COMMUNITY ROOM

YSTAFELL GYMUNEDOL



NEW ALLOTMENT LAYOUT

CYNLLUN RHANDIR NEWYDD

### CYFLEUSTERAU

Mae'r datblygiad newydd yn darparu'r canlynol:

- Ysgol Gynradd 2820m<sup>2</sup> â dau ddsbarth i bob blwyddyn (gan gynnwys Gofod Cymunedol). Dyluniwyd yr ysgol i fod yn Carbon Net Sero.
- Llwybr mynediad sy'n ddiogel i ddisgyblion.
- Perllan yr ysgol.
- 1 x Cae chwarae pob tywydd 3G 4170m<sup>2</sup>
- 1 x Cae chwarae pob tywydd 2G 833m<sup>2</sup>
- Meysydd chwarae ac ardal chwarae meddal i'r ysgol.
- Maes Parcio i staff ac ymwelwyr.
- Parc Chwarae cyhoeddus newydd.
- 26 Rhandir Cymunedol (gan gynnwys: Siediau, Casgen Ddŵr, Cytiau Ieir a Cholomendai. Mynediad, cylchrediad, ffensio, diogelwch a pharcio gwel).)
- Parthau gwella ecolog.
- Parthau bio-ddargadw a phwl.
- Dolydd blodau gwyllt.

### FACILITIES

The new development provides:

- A new 2820 m<sup>2</sup> Two Form Entry Primary School (including Community Space). The school has been designed to be **Net Zero Carbon**.
- Safe pupil access route.
- School Orchard.
- 1 x 4170 m<sup>2</sup> 3G All Weather Pitch.
- 1 x 833 m<sup>2</sup> 2G All Weather Pitch.
- School Playgrounds & Soft Play.
- Staff & Visitor Car Park.
- New Public Play Park.
- 26 Community Allotments (including: Sheds, Water Butts, Chicken Coops & Pigeon Loft. Improved access, circulation, fencing, security and parking).
- Ecological enhancement zones.
- Bio-retention zones and Pond.
- Wildflower Meadows.

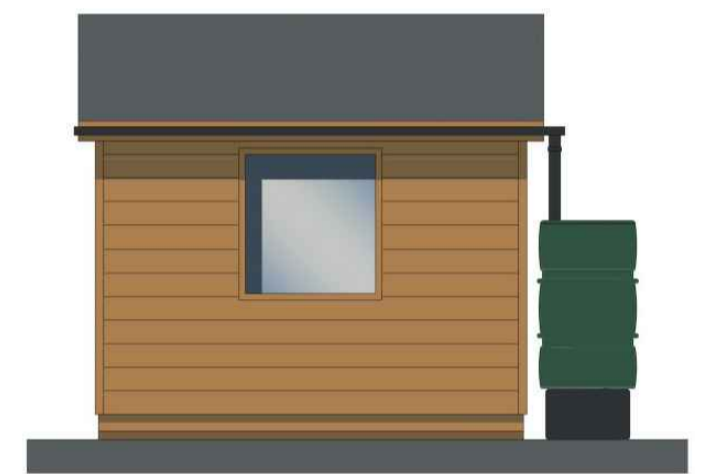


VIEW TO APPROACH

GOLWG I DDYNESU



ALLOTMENT SHEDS



SIEDIAU RHANDIR

### CYMUNED

Gyda chytundeb yr ysgol, bydd y cyfleusterau canlynol yn cael eu darparu: caeau pob tywydd (rygbi, pêl-droed 5 bob ochr, pêl-rwyd), cwrt pêl-fasged a phêl-rwyd, cegin gymunedol / ystafell gyfarfod gyda mynediad at neuadd. 26 rhandir newydd (wedi'u hadleoli) (a'u defnyddir drwy gymdeithas rhandiroedd) gyda pharcio cyfyngedig, mynediad a chylchrediad gwel i ac yn y safle, sied, casgen ddŵr, cwt ieir, ffin ddiogel, ffensiâu a gatiâu i'r plot ac un colomendy gerllaw.

### COMMUNITY

Subject to agreement with the school, the following facilities are provided: All Weather Pitches (Rugby, 5-A-Side, Netball), Basketball & Netball Court, Community Kitchen / Meeting Room with access to Hall space. 26 New (replacement) Allotments (use via an Allotment Association) with; Limited Parking, improved Site Access & Circulation, Shed, Water Butt, Chicken Coop, Secure Boundary, Plot Fencing & Gates & 1 Nr Pigeon Loft.

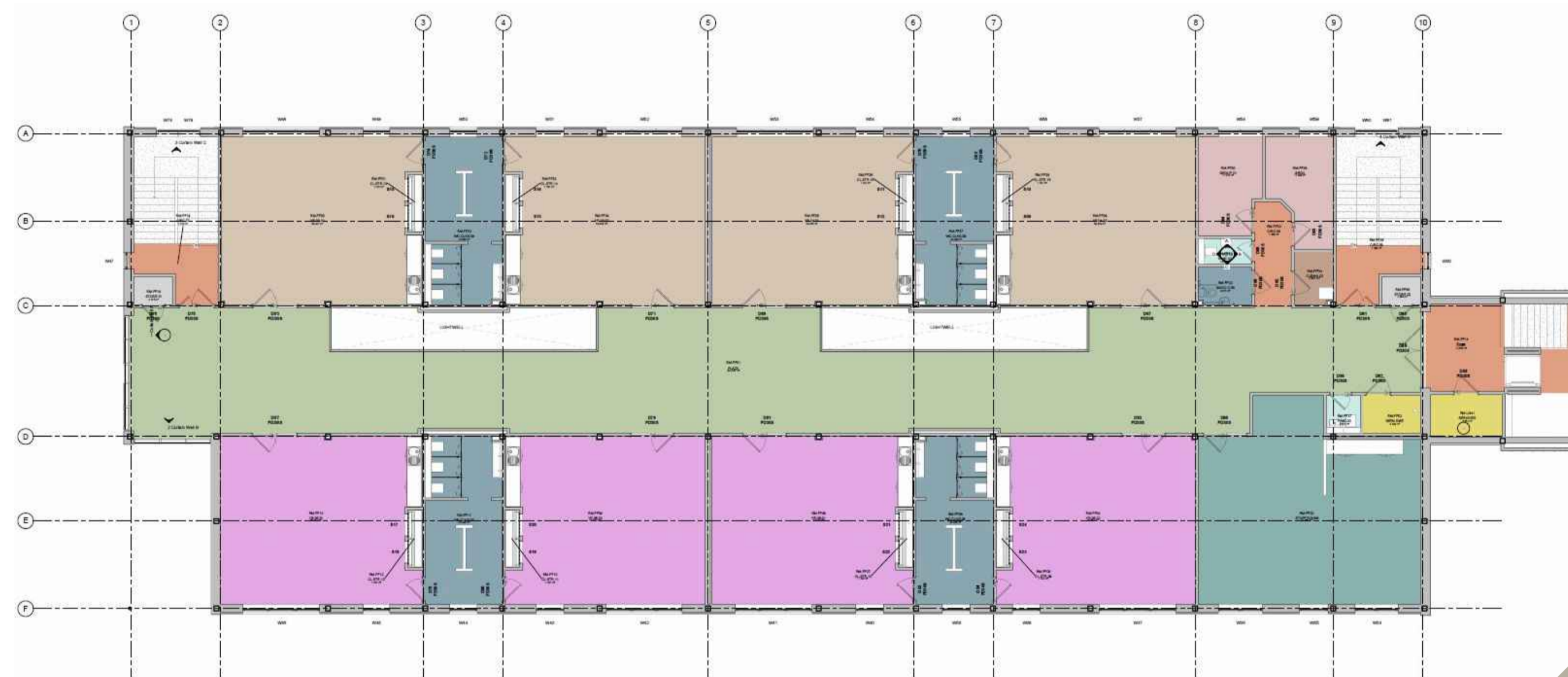
# YR ADEILAD NEWYDD - GOSODIAD

## THE NEW BUILDING - LAYOUT



LOWER GROUND FLOOR PLAN

CYNLLUN LLAWR GWAELOD IS



FIRST FLOOR PLAN

CYNLLUN LLAWR CYNTAF

### CYMWYSIADAU:

Llawr Gwaelod: Lobi, Swyddfa Derbynfa, Ystafell y Prifathro a Chyfarfodydd, Toiledau ac Ystafell Newid Staff, Ystafell Salwch, Ystafell y Cydlynnydd Anghenion Addysgol Arbennig, Ystafell Gymunedol, Prif Neuadd a Stiwdio, Cegin a Storfeydd, Storfeydd Bwyta ac Ymarfer Corff, Ystafelloedd Peiriannau.

Llawr Gwaelod Isaf: Meithrinfa y gellir ei rhannu'n adrannau, x2 Dosbarth Derbyn, x4 Dosbarthiadau CA1, Toiledau ac Ystafell Gotiau, Ystafell Newid a Chawodydd, Sgwâr Dysgu, Storfeydd.

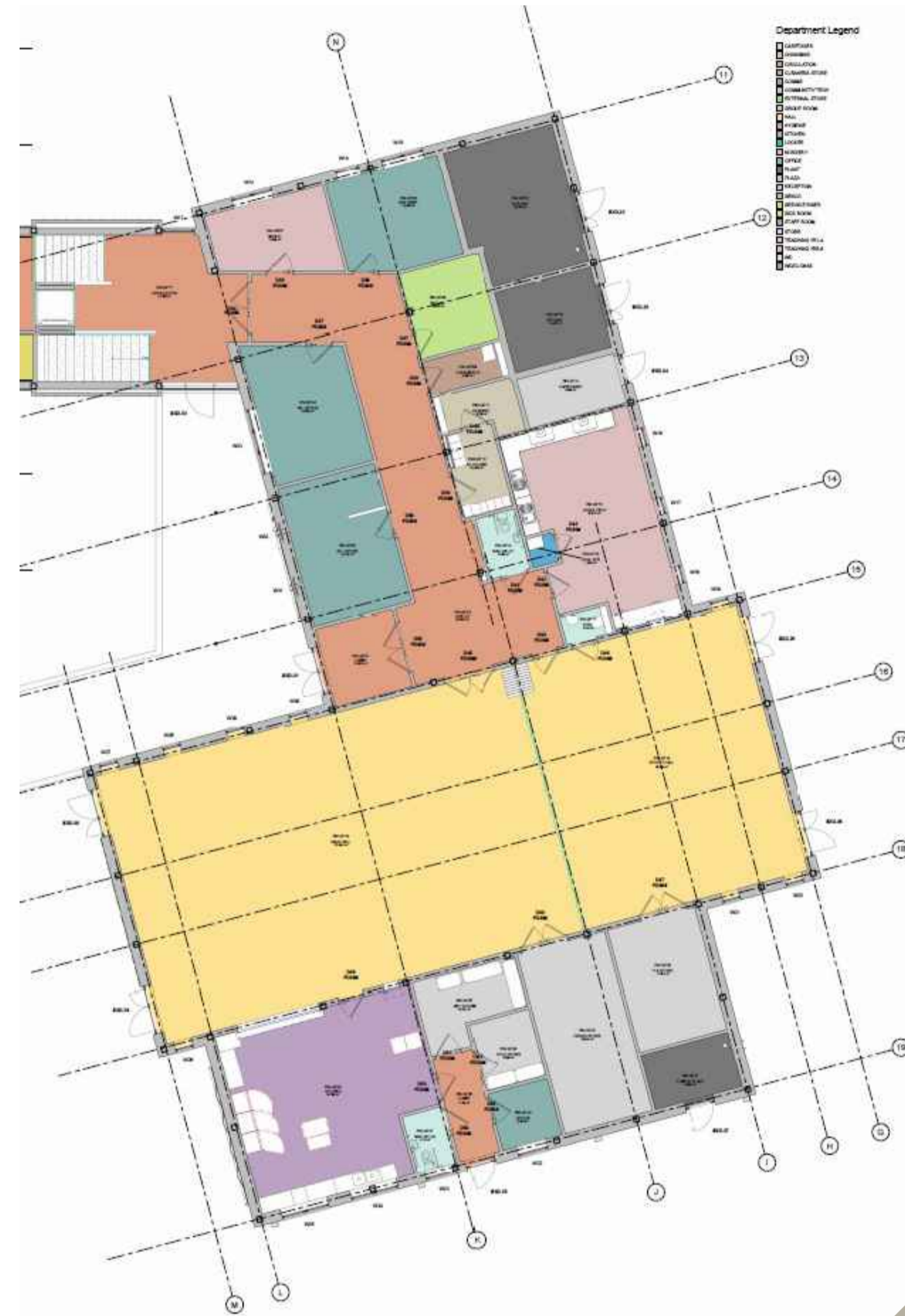
Llawr Cyntaf: x8 Dosbarthiadau CA2, x2 Ystafelloedd Gnŵr, Ystafell Staff, Toiledau ac Ystafell Gotiau, Sgwâr Dysgu.

### ACCOMMODATION:

Ground Floor: Lobby, Reception Office, Head Teacher & Meeting Room, Staff WCs & Changing, Sick Room, Special Education Needs Coordinator (SENCO) Room, Community Room, Main & Studio Hall, Kitchen & Stores, Dining & PE Stores, Plant Rooms.

Lower Ground Floor: Sub-dividable Nursery, X2 Reception Classes, X4 KS1 Classes, WCs & Cloaks, Shower & Changing Room, Learning Plaza, Stores.

First Floor: X8 KS2 Classes, X2 Group Rooms, Staff Room, WCs & Cloaks, Learning Plaza.



GROUND FLOOR PLAN

CYNLLUN LLAWR GWAELOD

Dyluniwyd y datblygiad i fodloni targed **CARBON NET SERO** gweithredol gyda sgôr **RHAGOROL**. Bydd nifer sylweddol o **BANELI SOLAR FFOTOFOLTAIDD** yn cael eu gosod ar y to a bydd yr adeilad yn cael ei wresogi gan ddefnyddio **PYMPIAU GWRES O'R AER**. Bydd manylder yn sicrhau y bydd adeilad yn cael **CARBON YMGORFFOREDIG ISEL** yn cael eu darparu.

Ein nod yw dargadw cymaint o'r **COED** a'r **GWRYCHOEDD** presennol â phosibl, ond cynigwn hefyd bod cynllun **TIRLUNIO** sylweddol yn cael ei gynnwys i gefnogi'r **ECOLEG** a'r strategaeth liniaru draeniad storm, gwella **BIOAMRYWIAETH** a gwella **ESTHETEG** y safle a phreifatwydd perimedrau'r safle.

Nod y datblygiad yw sicrhau **CYSYLLTEDD** gwell rhwng gofodau **DYSGU** mewnol ac allanol. Mae **PWLL** wedi'i gynnwys ar gyfer dysgu **ECOLEGOL** ynghyd â **PHERLLAN** ac **AMFFITHEATR** allanol ar gyfer addysgu, ymgysylltu a pherfformiadau.

Bydd y datblygiad yn croesawu potensial sy'n creu **GWERTH CYMDEITHASOL** ac sy'n cyflwyno effaith ar gyfer **CENEDLAETHAU'R DYFODOL**.

Mae'r cynigion yn anelu i ddarparu cyfleusterau **O'R RADD FLAENAF** gan fodoni anghenion **CWRICWLWM** cyfoes. Mae'r safle'n creu cyfleusterau **CYMNEDDOL** ychwanegol a gwella, gan **GRYFHAU PERTHNASOEDD** a Grwpiau Cymunedol gan hefyd wella **ADDYSG, LLESIAINT** yn ogystal â dathlu **ETIFEDDIAETH DDIWYLLIANNOL**. Dyluniwyd yr adeilad a'r safle i fod yn **HYGYRCH** i bawb gan sicrhau **CYNHWYSIANT** llwyr.



SECTION THROUGH TEACHING BLOCK

ADRAN DRWY BLOC ADDYSGU



NURSERY

MEITHRINFA

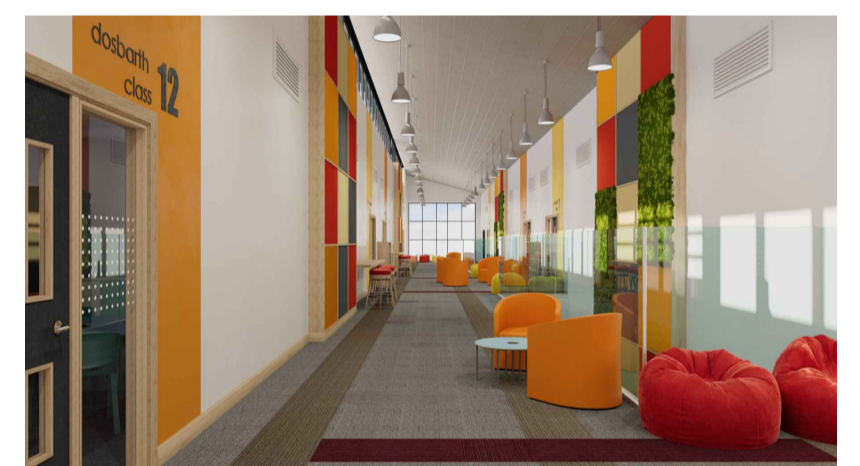


HALL

NEUADD



PLAZA



PLAZA

The development has been designed to meet an operational **NET ZERO CARBON** target with an **EXCELLENT** **Green Star** rating. There will be a significant number of **SOLAR PHOTOVOLTAIC PANELS** mounted on the roof and the building will be heated using **AIR SOURCE HEAT PUMPS**. Specifications will ensure the delivery of a **LOW EMBODIED CARBON** building and site.

We aim to retain as many existing **TREES** and **HEDGEROWS** as possible, but also propose to include a significant **LANDSCAPING** scheme to support the **ECOLOGY** and storm drainage mitigation strategy, enhance **BIODIVERSITY** and improve site **AESTHETICS** and site perimeter privacy.

The development aims to bring greater **CONNECTIVITY** between internal and external **LEARNING** spaces. A **POND** is included for **ECOLOGICAL** learning along with an **ORCHARD** and external **AMPHITHEATRE** for teaching, engagement & performances.

The development will embrace policies that create **SOCIAL VALUE** and delivers impact for **FUTURE GENERATIONS**.

The proposals aim to provide a **STATE OF THE ART** facility meeting the needs of a 21st Century **CURRICULUM**. The site creates additional and improved **COMMUNITY** facilities, **STRENGTHENING RELATIONSHIPS** with Community Groups whilst improving **EDUCATION, WELLBEING** and celebrating **CULTURAL HERITAGE**. The building and site is designed to be **ACCESSIBLE** for all providing total **INCLUSIVITY**.

# YR ADEILAD NEWYDD - GWEDD

## THE NEW BUILDING - APPEARANCE



LOWER GROUND FLOOR PLAN

CYNLLUN LLAWR GWAELOD IS



WEINERBERGER FORUM SMOKED BRANCO FACE BRICK



### YMDDANGOSIAD:

Mae mwyafrif y ffasâd wedi'i orffen â Bric Wyneb o ansawdd uchel (*Weinerberger Forum Smoked Branco*) sy'n cyfeirio at y tonau yn y gwaith brics, cerrig a'r rendr presennol. Mae cladin *Rockpanel* (Cerrig Glo Caled Basalt) ar y Lefelau Uchaf gyda Tho Sêm Codedig Metel (Glo Carreg) â lliw tebyg gan gydnabod treftadaeth mwyngloddio Mynydd Cynffig. Rhoddir cladin Sêm Codedig Metel (Coch) ar y waliau nodwedd gyda rhywfaint o Alwminiwm â Haen Phowdr (Coch) ar y ffenestri, gan ddarparu cyferbyniad er diddordeb gweledol gan hefyd gynnal cysylltiad â hunaniaeth yr ysgol. Alwminiwm â Haen Phowdr (Glo Carreg) yw'r ffenestri a'r drysau allanol. Mae To Gwair / Briweg (*Sedum*) i Storfa'r Feithrinfa, sydd hefyd yn darparu ardal chwarae dan do. Mae ardaloedd allanol â phalmentydd a muriau cynnal yn defnyddio defnyddiau sy'n cyd-fynd â'r Bric Wyneb a'r cladin Glo Carreg ar yr adeilad ei hun.



LOWER GROUND FLOOR PLAN

CYNLLUN LLAWR GWAELOD IS

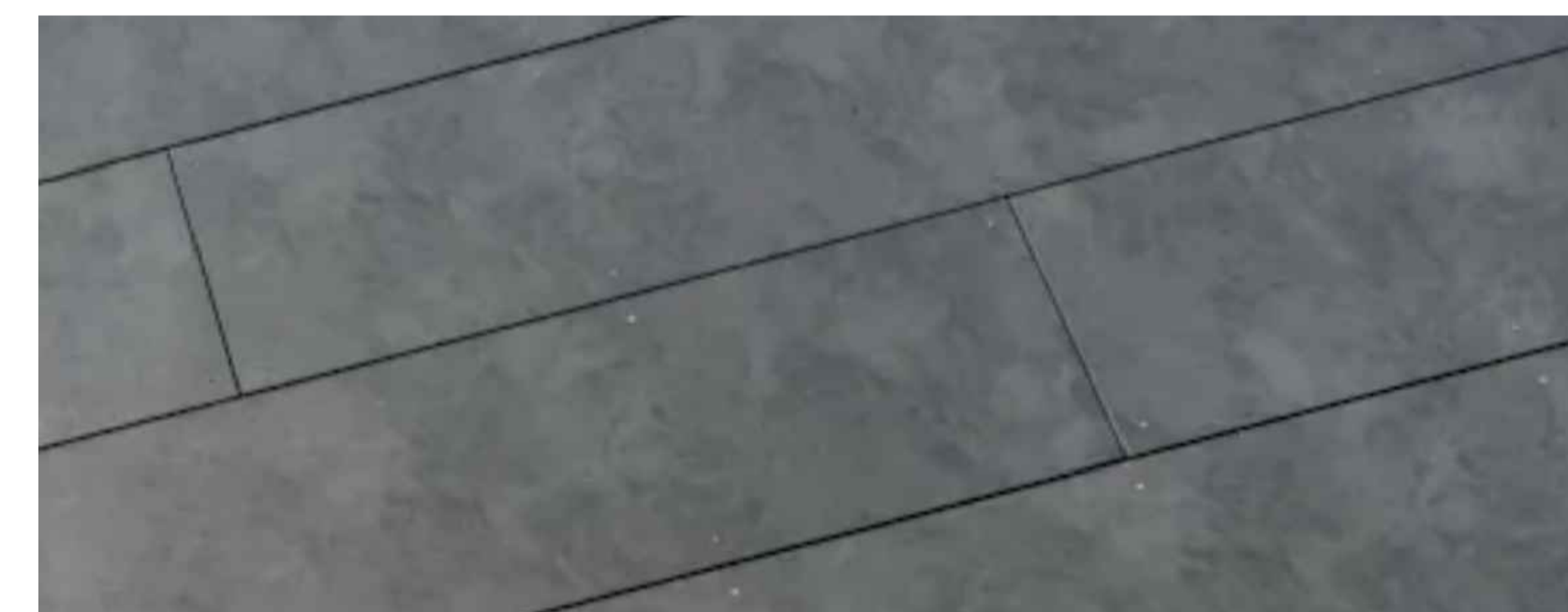


EUROCLAD VIEO STANDING SEAM WALL CLADDING FLAME RED



LOWER GROUND FLOOR PLAN

CYNLLUN LLAWR GWAELOD IS



ROCKPANEL WALL CLADDING BASSALT ANTHRACITE

### APPEARANCE:

The majority of the facade is finished with a high quality Face Brick (*Weinerberger Forum Smoked Branco*) which references the tones in existing brickwork, stone & render. Upper levels have been shown clad in *Rockpanel* (*Stones Anthracite Bassalt*) with a similar coloured Metal Standing Seam Roof (*Anthracite*) providing an acknowledgement to Kenfig Hill's mining heritage. Feature walls are clad with Metal Standing Seam (*Red*) and some window surrounds in Powder Coated Aluminium (*Red*) providing a contrast for visual interest whilst maintaining a connection to the school's identity. External Windows & Doors are Powder Coated Aluminium (*Anthracite*). The large external Nursery Store which also provides an area of covered play has a Grass / *Sedum* Roof. External paved areas and retaining walls use materials which complement the Face Brick and Anthracite cladding on the building itself.



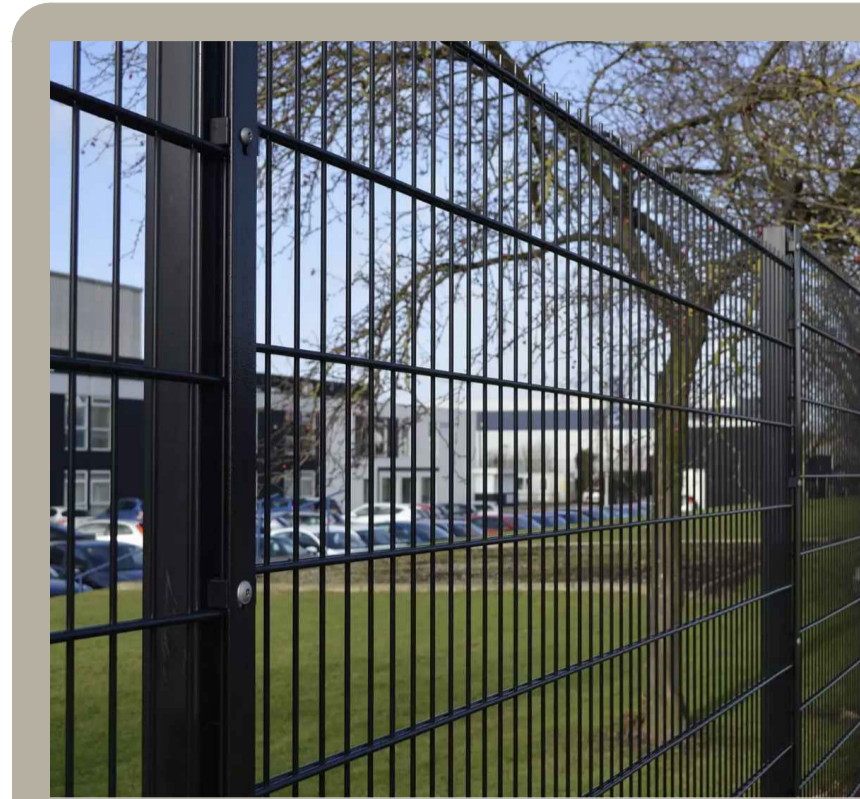
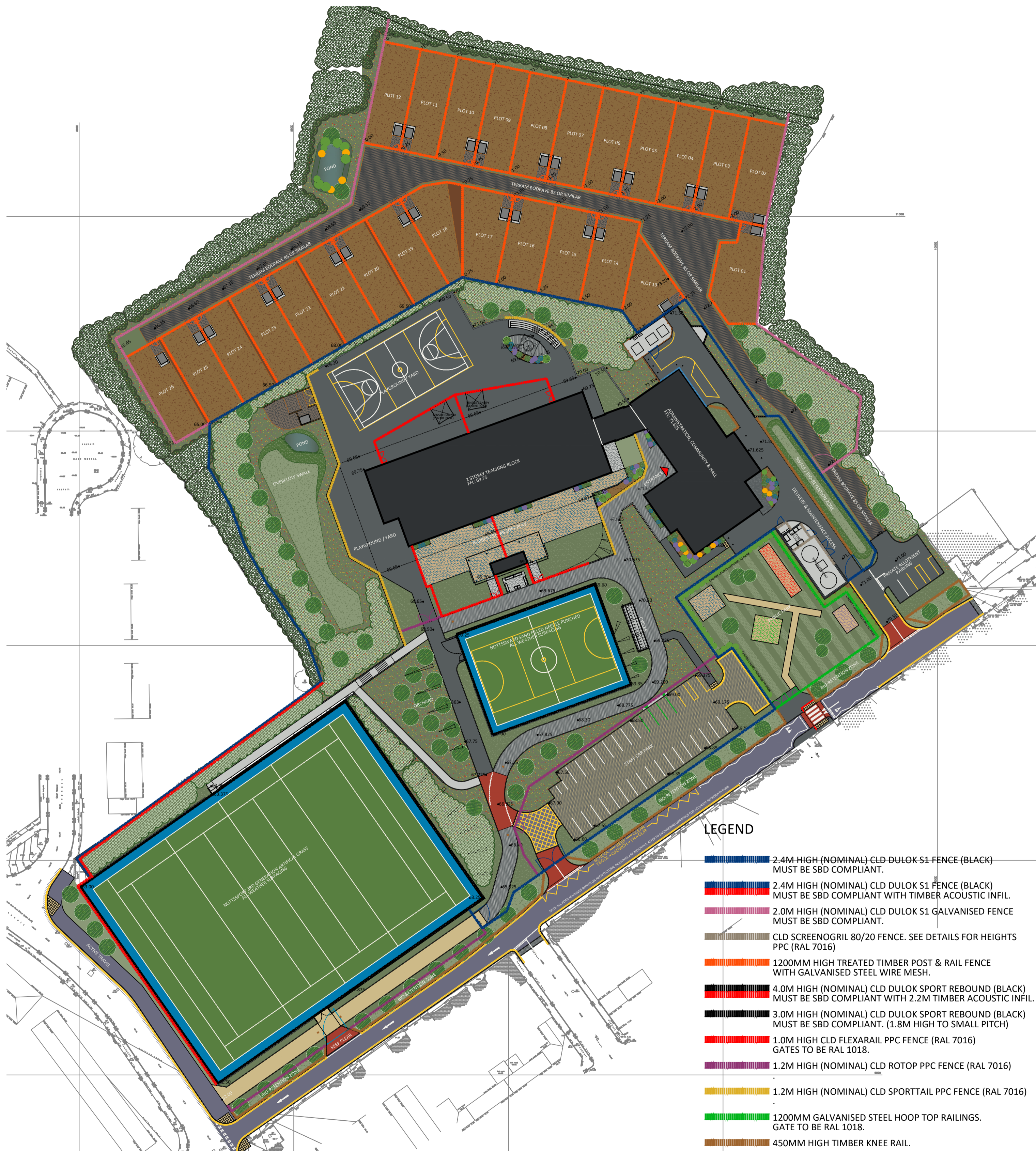
LOWER GROUND FLOOR PLAN

CYNLLUN LLAWR GWAELOD IS



EUROCLAD VIEO STANDING SEAM ROOF CLADDING ANTHRACITE

# FFINIAU PERIMEDR A DIOGELWCH PERIMETER BOUNDARIES & SECURITY



DULOK S1



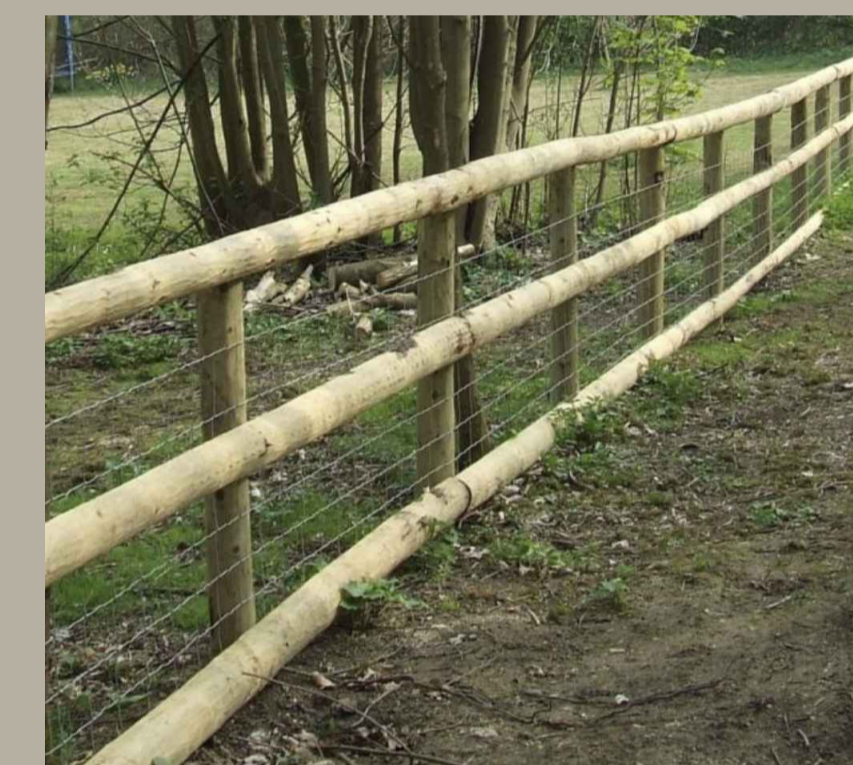
DULOK S1 TIMBER INFIL



DULOK SPORT REBOUND



TIMBER FEATHER EDGE



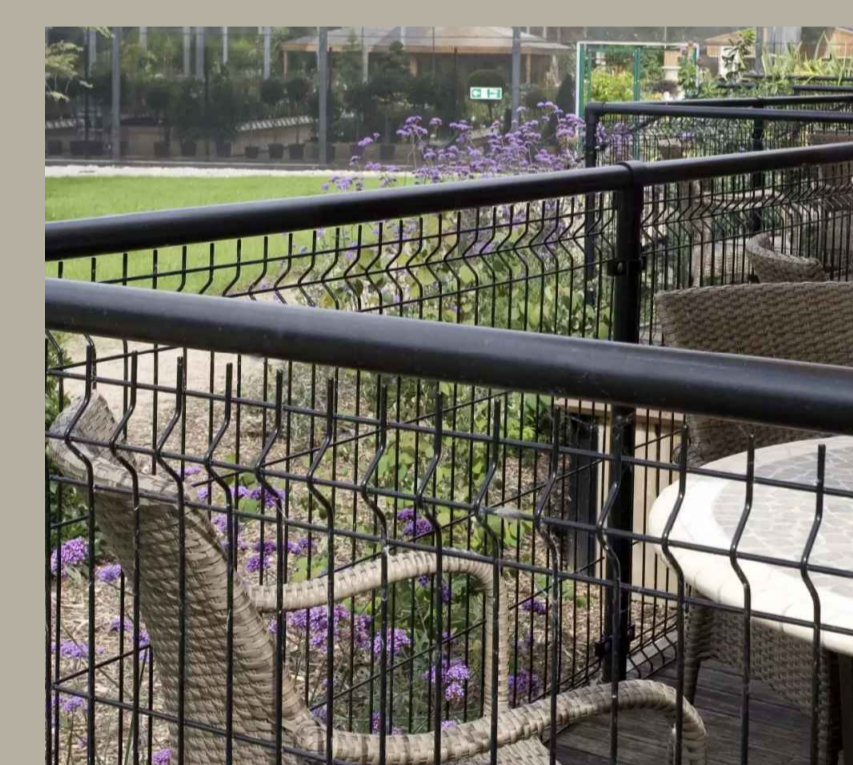
TIMBER POST, RAIL & WIRE



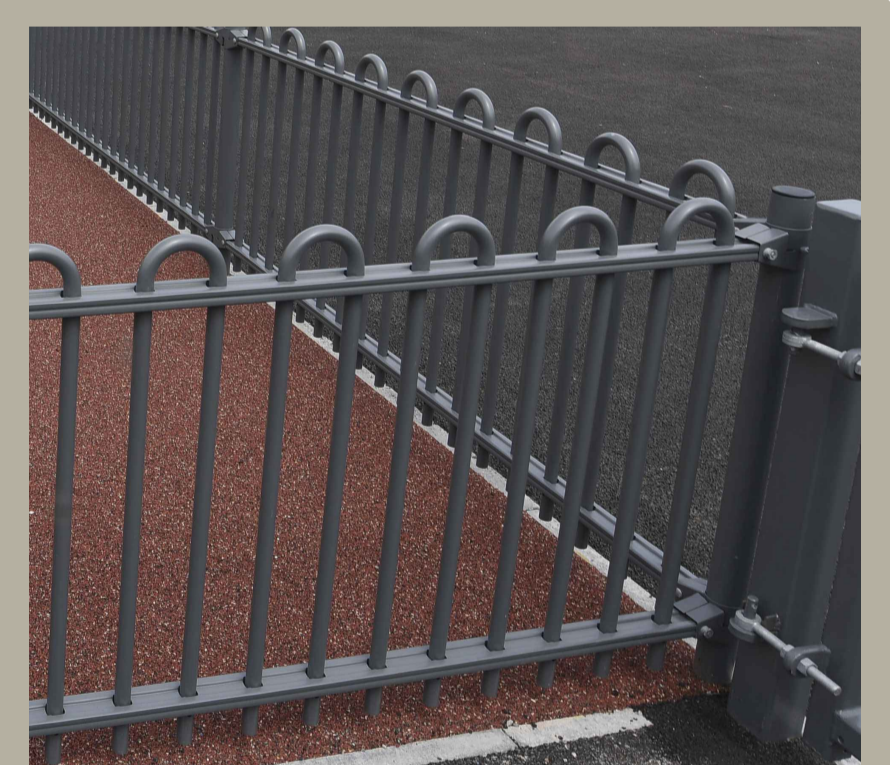
SCREENOGRIL 80/20



ROTOP



SPORTAIL



FLEXARAIL

Reducing crime by good design

# TIRLUNIO, ECOLEG A BIOAMRYWIAETH LANDSCAPING, ECOLOGY AND BIODIVERSITY

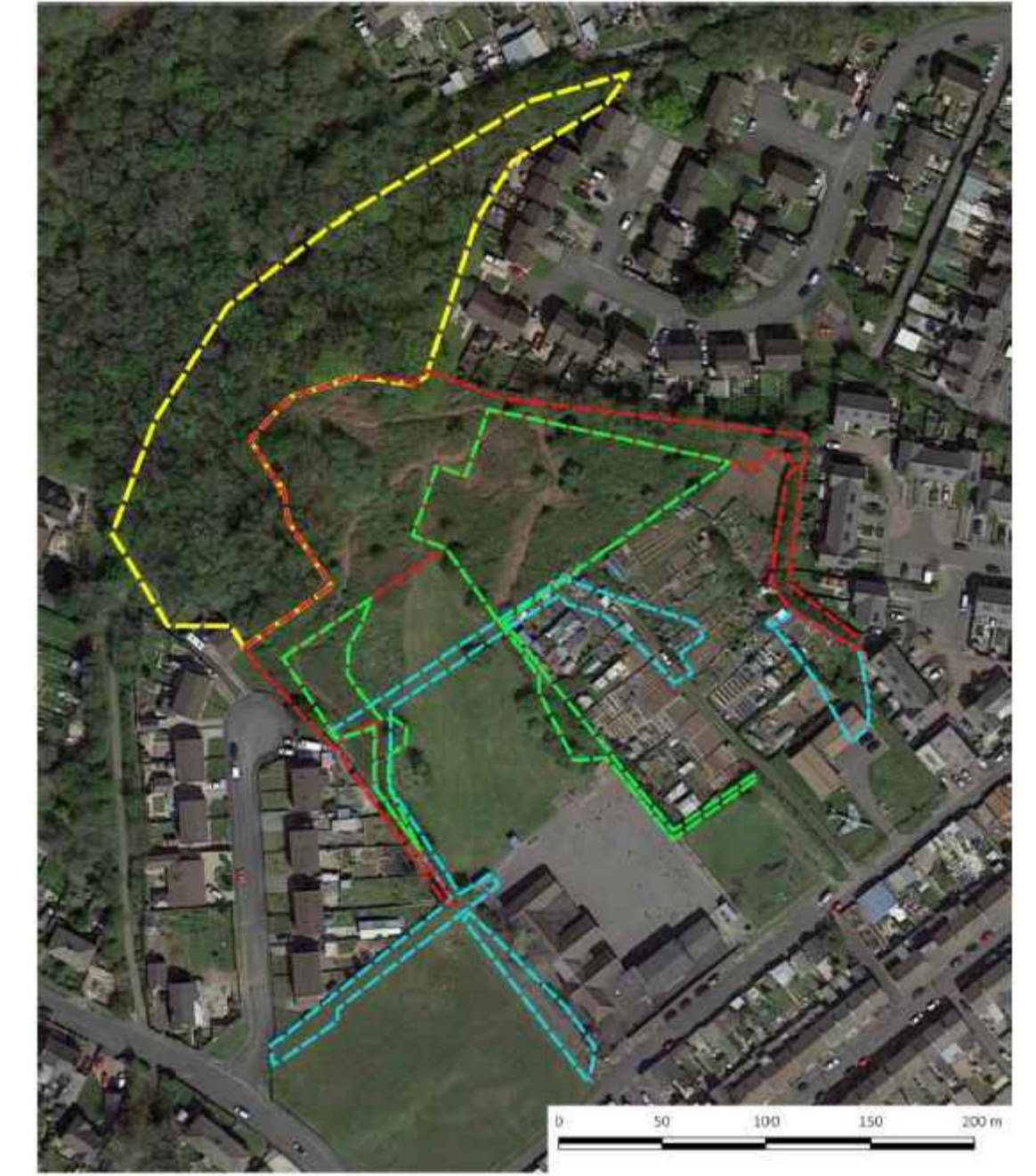


	EXISTING HEDGEROWS & SCRUB		SILVER BIRCH (BETULA PENDULA)
	NEW HEDGEROW PLANTING		FIELD MAPLE (ACER CAMPESTRE)
	WILDFLOWER MEADOW PLANTING		DWARF FIELD MAPLE (ACER CAMPESTRE NANUM)
	GRASS TURF PLANTING		ROWAN (SORBUS AUCUPARIA)
	BIO-RETENTION PLANTING		HORSE CHESTNUT (AESCULUS HIPPOCASTANUM)
	TOPSOIL & DRESSING		MALUS COX'S ORANGE PIPPIN (APPLE TREE)
	POND PLANTING		MALUS EGREMENT RUSSETT (APPLE TREE)
	POND MARGIN PLANTING		PYRUS BEURRE HARDY (PEAR TREE)
			PYRUS COMMUNIS CONFERENCE (PEAR TREE)
			PRUNUS DOMESTICA VICTORIA (PLUM TREE)
			PRUNUS DOMESTICA HAUZWETSCH (PLUM TREE)

## PLANTING LEGEND CHWEDL PLANNU



## PRELIMINARY ECOLOGICAL APPRAISAL



## HABITAT PLAN CYNLLUN CYNEFIN

## ECOLEG, TIRWEDDU A BIOAMRYWIAETH:

Mae gan y safle nifer o faterion Ecoleg i'w lliniaru, ac mae manylion llawn y rheini i'w gweld yn nogfennau'r cais. Maen nhw'n cynnwys y mesurau lliniaru gofynnol y bydd angen eu cymryd. Mae'r datblygiad yn croesawu'r gwelliannau Ecolegol sy'n ofynnol ac yn cynnwys cynllun tirweddol sylweddol, sy'n ceisio dargadw'r ecoleg bresennol a hybu bioamrywiaeth. Yn ogystal â thirweddol cyffredinol, mae'r cynllun yn manteisio o bwl a sawl parth bio-ddargadw sydd nid yn unig wedi'u cynllunio i ymdopi â Dŵr Storm mewn modd cynaliadwy ond hefyd i annog y broses o gyflwyno rhywogaethau newydd gan ganiatáu iddyn nhw ffynnu. Mae mwyafrif yr holl blannu'n cynnwys rhywogaethau brodorol, yn enwedig plannu gwrychoedd, sy'n ffactor allweddol o ran cysylltu cynefinoedd presennol a newydd â'i gilydd. Bydd plannu coed ar y lôn bresennol yn creu effaith Rhodfa, gan roi estheteg llawer gwell i'r ffordd sy'n arwain at y safle.

## ECOLOGY, LANDSCAPING & BIODIVERSITY:

The site has a number of Ecology matters to mitigate, full details of which can be found in the application documents, which include the required mitigation measures that will need to be undertaken. The development embraces the Ecological enhancements required and includes a significant landscaping scheme, which seeks to preserve existing ecology and to promote bio-diversity. In addition to general landscaping, the scheme benefits from a pond and numerous bio-retention zones designed to not only deal with Storm Water in a sustainable manner but, to encourage the natural introduction of new species and allow them to thrive. The majority of all planting comprises of native species, especially new hedgerow planting which is a key factor in linking existing and new habitats together. Tree planting to the existing lane will create an Avenue effect providing a much improved aesthetic to the approach.

## CAMAU NESAF

Rydym yn croesawu eich adborth ar y cynigion ar gyfer ailddatblygu Ysgol Gynradd Mynydd Cynffig a byddem yn ddiolchgar pe gellid cwblhau a dychwelyd y ffurflenni adborth.

Gellir anfon unrhyw sylwadau dros e-bost at y tim hefyd drwy: [mail@asbriplanning.co.uk](mailto:mail@asbriplanning.co.uk)

Sicrhewch ein bod wedi derbyn unrhyw sylwadau erbyn yr **3<sup>fed</sup> o Ragfyr 2023**

Ar ôl y digwyddiad hwn a'r broses Ymgynghori Cyn y Cais statudol sy'n cyd-redeg â'r digwyddiad hwn, bydd Cyngor Bwrdeistref Sirol Pen-y-Bont a'u Tim Dylunio yn edrych yn fanwl ar yr holl adborth a dderbyniwyd cyn cyflwyno'r cais cynllunio.

Rhagwelir y bydd Cais Cynllunio'n cael ei gyflwyno i'r Awdurdod Cynllunio Lleol ym mis Rhagfyr 2023. Diolch am fynychu'r digwyddiad ac am rannu eich adborth.

## NEXT STEPS:

We would welcome your feedback on the proposals for the redevelopment of Mynydd Cynffig Primary School and we would be grateful if the feedback forms could be completed and returned.

Comments can also be emailed to the team at: [mail@asbriplanning.co.uk](mailto:mail@asbriplanning.co.uk)

Please ensure that all comments are received by **08th December 2023**.

Following this exhibition and the statutory Pre-Application Consultation process that is running alongside this exhibition, Bridgend County Borough Council and their Design Team will look in detail at all feedback received prior to submission of the planning application.

It is anticipated that a Planning Application will be submitted to the Local Planning Authority in December 2023.

Thank you for attending this exhibition and providing us with your feedback.