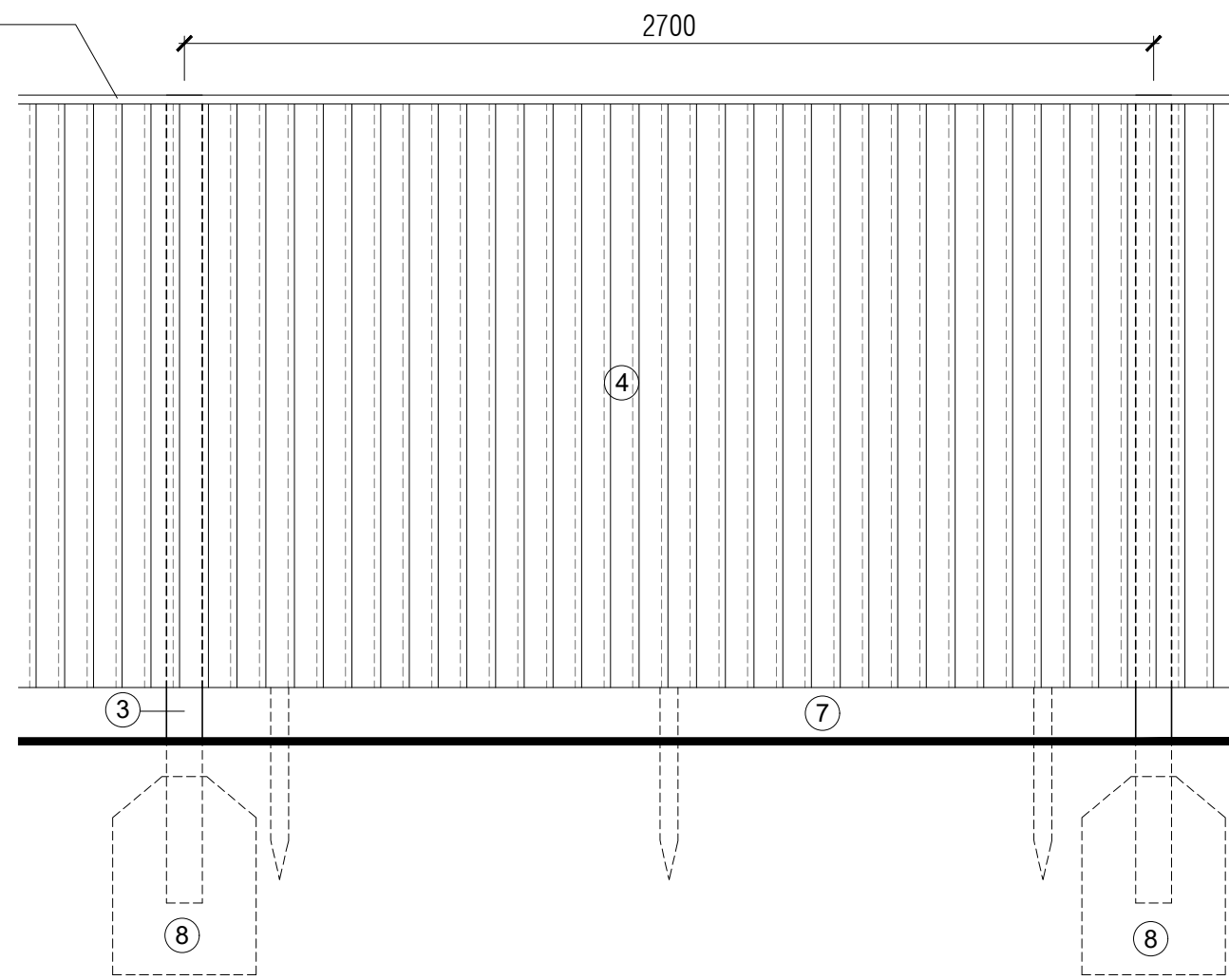
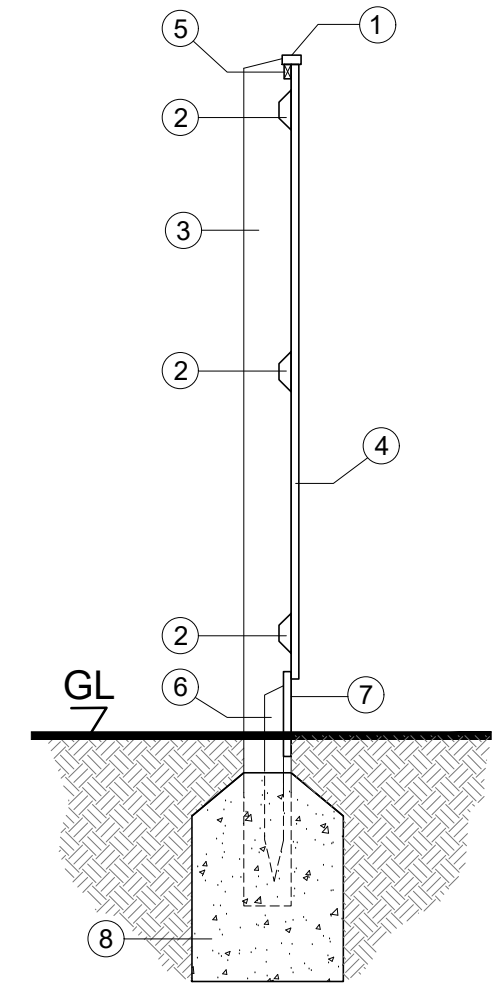


ELEVATION OF GATE

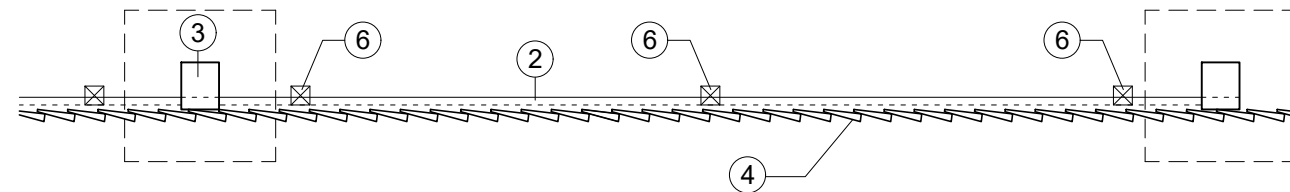


ELEVATION - 1800mm Close Boarded fence



SECTION

- ①. Cap rail - ex.50x25mm weathered and treated.
- ②. 75 x75mm aris rail.
- ③. 125 x 100mm treated timber posts at max. 2700mm cts.
- ④. 100 x 22 - 8mm feathered edged board, lapped 20mm.
- ⑤. Ex.19 x 38mm s.w.rail supporting cap rail.
- ⑥. Ex. 50 x 50mm s.w.treated post to support gravel board.
- ⑦. Ex. 225 x 20mm s.w.treated plinth / gravel board.
- ⑧. Foundations to Engineer's detail.



PLAN

GATE :

- Ⓐ. Garden gate - 900mm wide s.w. treated framed, ledged and braced & cap rail. (Boarding to match fence).
- Ⓑ. Pair of 450mm galvanised tee hinges.
- Ⓒ. 44 x 69mm s.w. treated timber gate posts bolted to house or 125 x 100mm treated timber post.
- Ⓓ. 200mm galvanised barrel bolt & suffolk latch.

**BOUNDARY TYPE A
1800mm Close Boarded Fence**

Figured dimensions and levels to be used. Any inaccuracies must be notified to the architect. Detail drawings and large scale drawings take precedence over smaller drawings.

Rev:	ISSUED FOR PLANNING.	MB 08.10.21	Rev:		Rev:		Rev:	
------	----------------------	-------------	------	--	------	--	------	--

PRELIMINARY	
PLANNING	✓
DESIGN	
TENDER	
CONSTRUCTION	

powelldobson
ARCHITECTS

Cardiff Office: Suite 1F, Building One, Eastern Business Park, Wern Fawr Lane, Old St Mellons, Cardiff CF3 5EA
Tel: +44 (0)133 33 201 001 Fax: +44 (0)29 2079 1212 email: cardiff@powelldobson.com

Drawing No.	Rev.
17062 (05) 120	-

Contract:	Residential Development at Abertridwr	Scale:	1:200 @ A1
	Former Windsor Colliery for United Welsh	Date:	Oct 2021
Title:	Boundary Type A - 1.8m Close Boarded Fence	Drawn:	C.L.
		Checked:	-