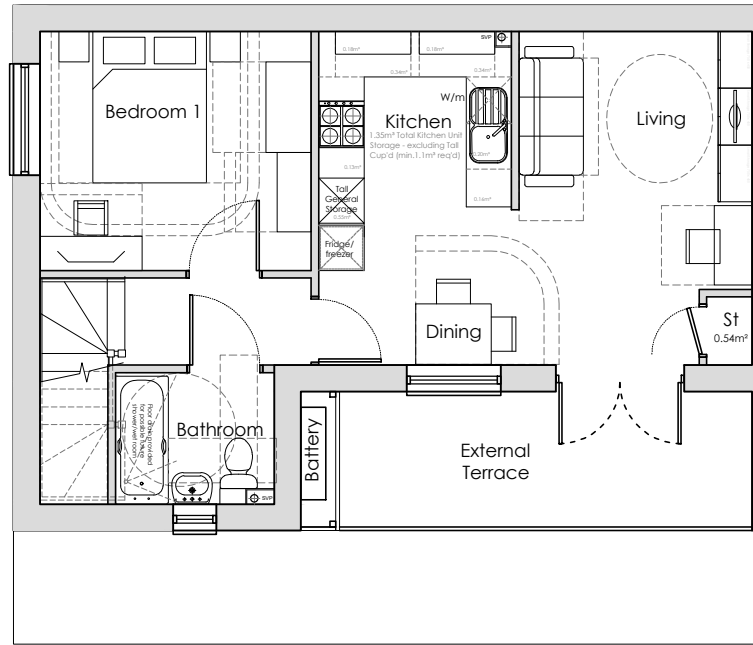


Housetype Flats - 1B2P - Render

AH - GROUND - PLOTS - 127, 129
 FIRST - PLOTS - 128, 130
 SR - GROUND - PLOTS - 73, 75, 87, 89
 FIRST - PLOTS - 74, 76, 88, 90



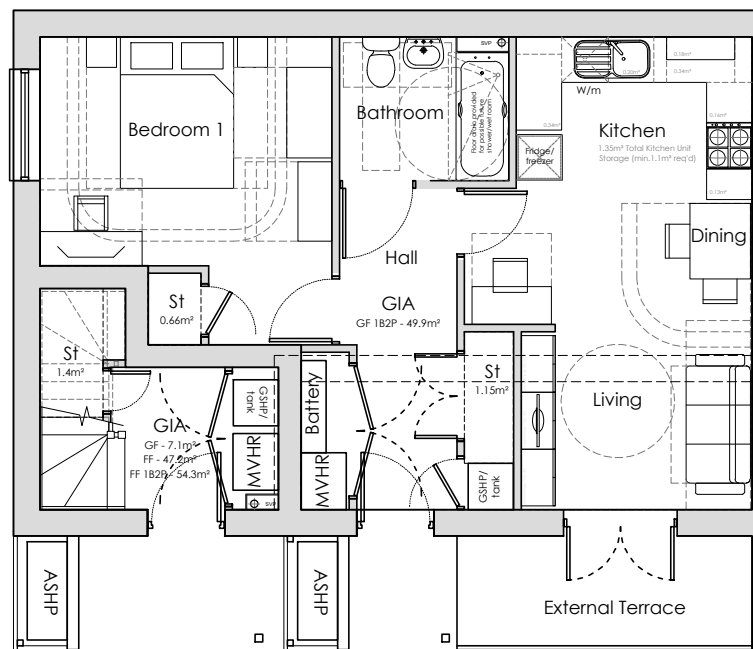
FIRST FLOOR



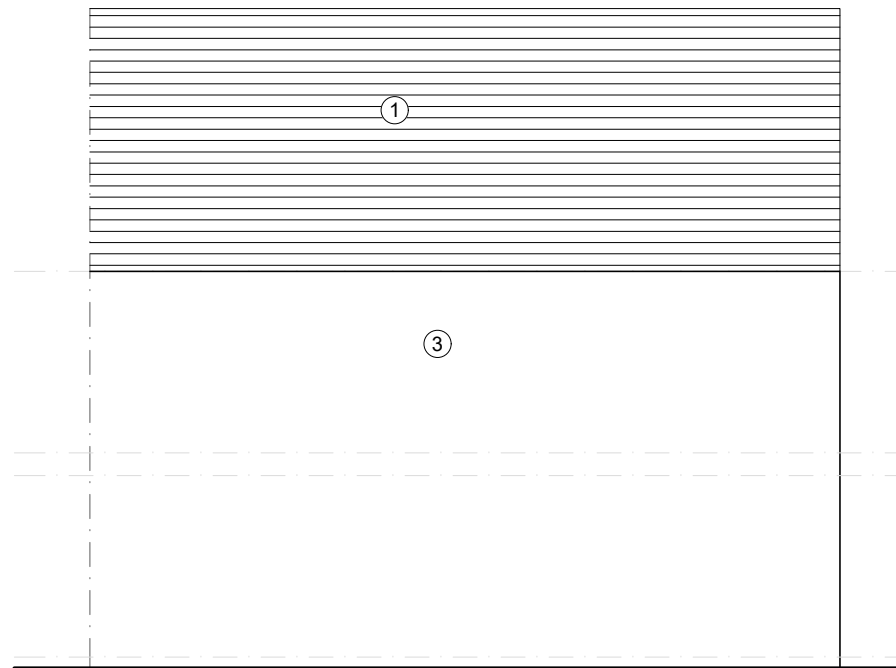
FRONT ELEVATION: **OPTION 1**

MATERIALS SCHEDULE:

1. Roof Finishes - Concrete Tiles - colours and spec. to be confirmed
2. Facing Brickwork - colours and spec. to be confirmed
3. Render - colour to be confirmed
4. Cladding - Timber/Fibre Cement - colours and spec. to be confirmed
5. Timber Louvres
6. UPVC Windows - colours and spec. to be confirmed
7. UPVC Doors - colours and spec. to be confirmed
8. Entrance Canopy
9. UPVC Rainwater Goods - colours to be confirmed
10. UPVC Fascias, Bargeboards & Soffits - colours to be confirmed



GROUND FLOOR



REAR ELEVATION



SIDE ELEVATION

Figured dimensions and levels to be used. Any inaccuracies must be notified to the architect. Detail drawings and large scale drawings take precedence over smaller drawings.

Rev: - ISSUED FOR PLANNING.
 A Plot numbers updated.

Rev: MB 08.10.21
 MB 11.11.21

Rev:

Rev:

PRELIMINARY	
PLANNING	✓
DESIGN	
TENDER	
CONSTRUCTION	

powelldobson
 ARCHITECTS

Cardiff Office: Suite 1F, Building One, Eastern Business Park, Wern Fawr Lane, Old St Mellons, Cardiff CF3 5EA
 Tel: +44 (0)333 33 201 001 Fax: +44 (0)29 2079 1212 email: cardiff@powelldobson.com

Contract: **United Welsh**
 Former Windsor Colliery Masterplan
 Title: **House Type Walk Up Flats - 1B2P Plans RENDER**

Drawing No. 17062 (05) 216
 Rev. A

Scale: 1:100@A3
 Date: August 21
 Drawn: MB
 Checked: BK