

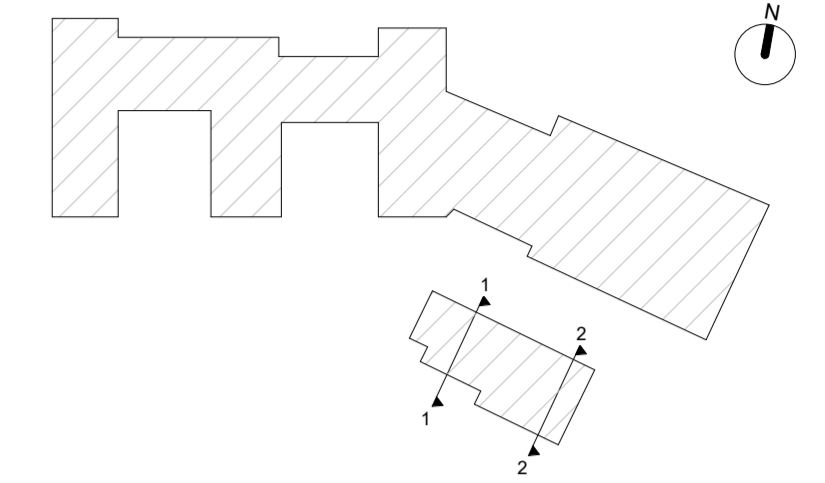
Notes:

© Rio Architects Ltd.

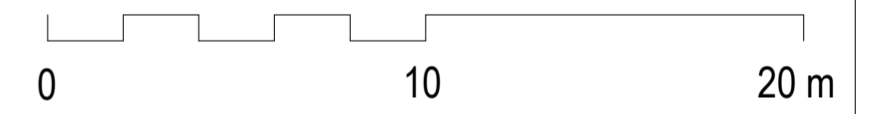
This drawing is copyright and must not be reproduced or disclosed to third parties without the prior written consent of Rio Architects Ltd.

This drawing is to be read in conjunction with all other relevant project drawings, specifications and schedules prepared by Rio Architects Ltd and any other relevant consultants, specialists or subcontractors.

CDM notes are provided to assist the contractor in managing residual hazards identified during the design stage. Any such notes do not relieve the contractor of their duties under all relevant CDM Regulations.

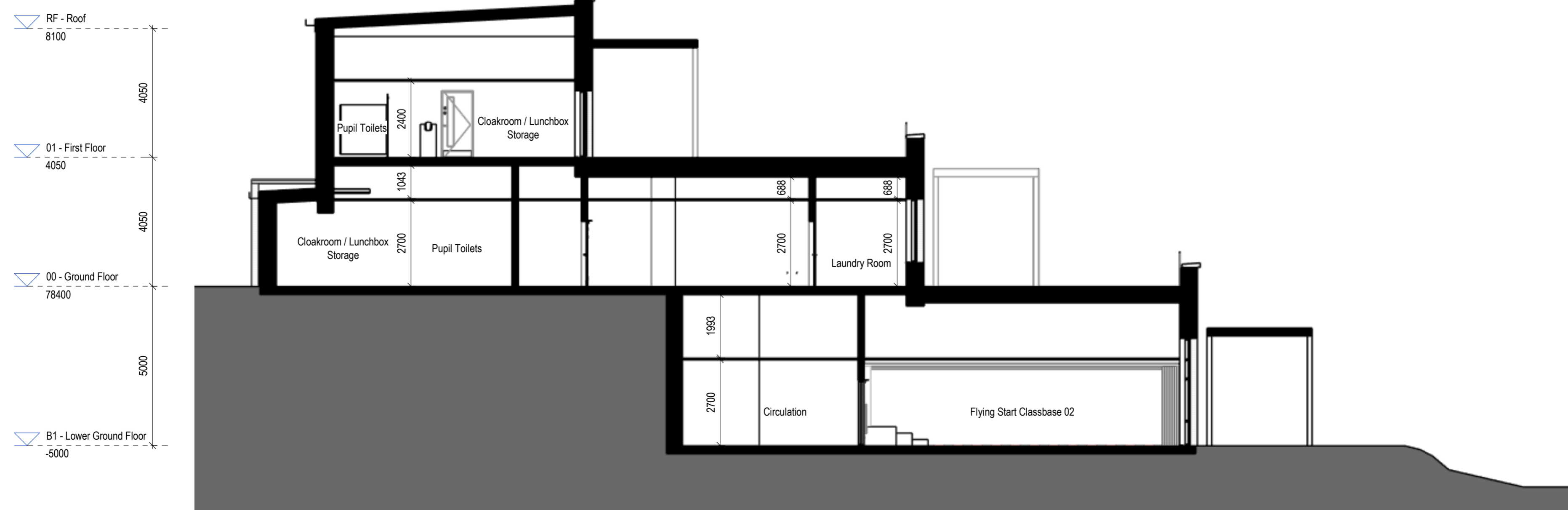


GA Building Section 02



Rev	Description	Rev'd	Chk'd	Date
P01	First Issue (PAC)	AJ	AB	01.12.21

STATUS NUMBER KEY:		DOCUMENTATION - SIGN-OFF	
WIP	S0 - Initial Status*	A1 - Authorised and Accepted	B1 - Partially Signed-off.
SHARED	S1 - Suitable for co-ordination**	ARCHIVE	CR - Final Construction Record Document
	S2 - Suitable for information		** For model file usage only.
	S3 - Suitable for review and comment		
	S4 - Suitable for stage approval		
	S5 - Withdrawn		
	S6 - Suitable for PIM Authorisation		
	S7 - Suitable for AIM Authorisation		



GA Building Section 03

Rio studio@rioarchitects.com
www.rioarchitects.com
@rioarchitects

Rio Cardiff 21a Allensbank Road Cardiff CF14 3PN +44 (0)29 2025 0066
Rio London 19 21 Hatton Garden London EC1N 8BA +44 (0)20 3691 7565
Rio Scotland 1 Lochrin Square Edinburgh EH3 9QA +44 (0) 131 357 4211

monmouthshire sir fynwy Cyngor Sir Fynwy Monmouthshire County Council

TEITL CYWAITH: PROJECT TITLE:
Ysgol 3-19 Y Fenni
Abergavenny 3-19 School

TEITL ARLUNIO: DRAWING TITLE:
Toriad TC Ysgol Isaf
GA Sections Lower School

TYNNY GAN: LW GWIRIO GAN: JY CYMERAD' GAN: RR
DRAWN BY: CHECKED BY: APPROVED BY:
RHIF SWYDD: 0395 GRADDFA: SCALE: 1 : 100 @ A1

PROJECT	TARDD	CYFROL	LEFEL	MATH	DISG.	RHIF
PROJECT ORIGIN	VOLUME	LEVEL	TYPE	DISCIP.	NUMBER	
26Z007	RIO	01	ZZ	DR	A	03-1301