

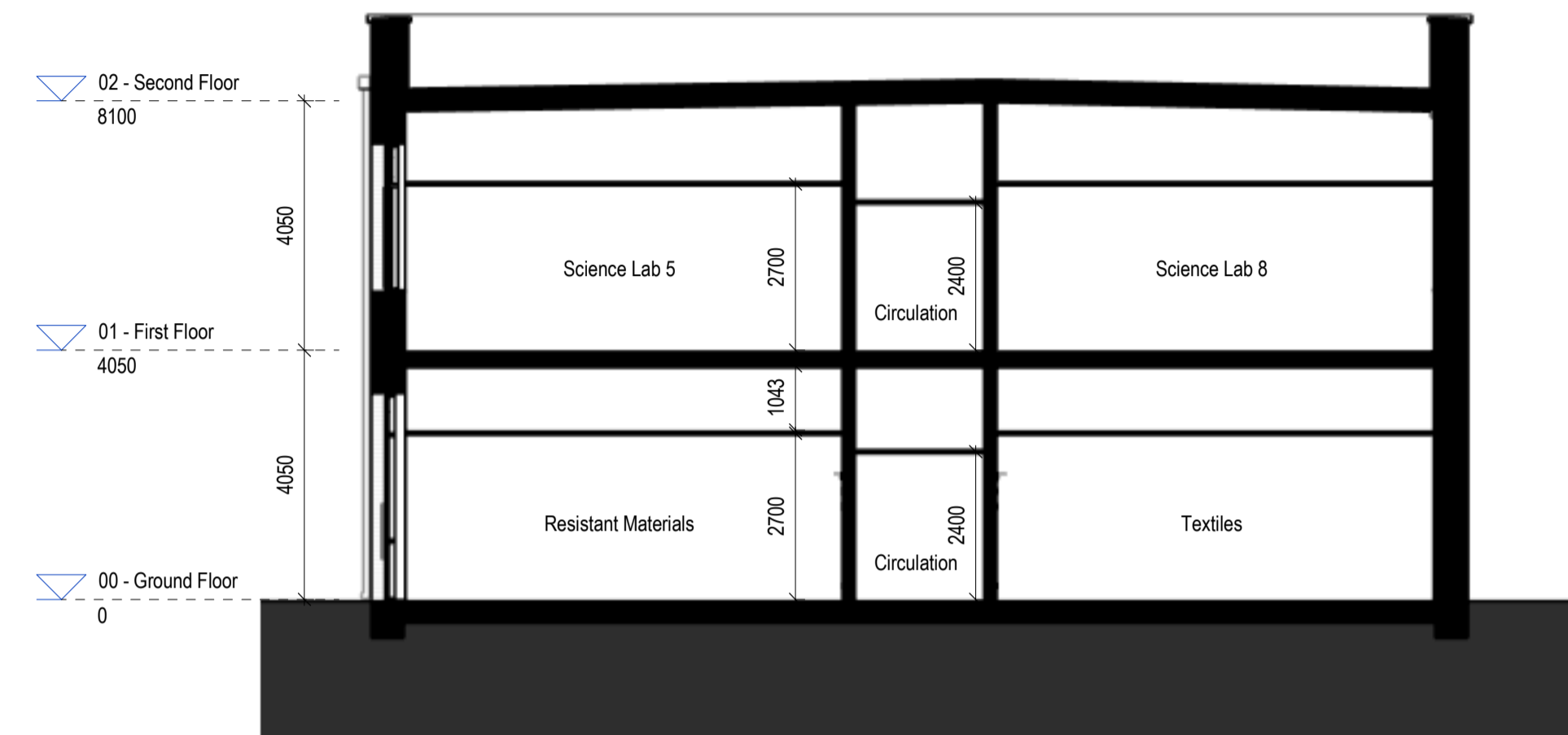
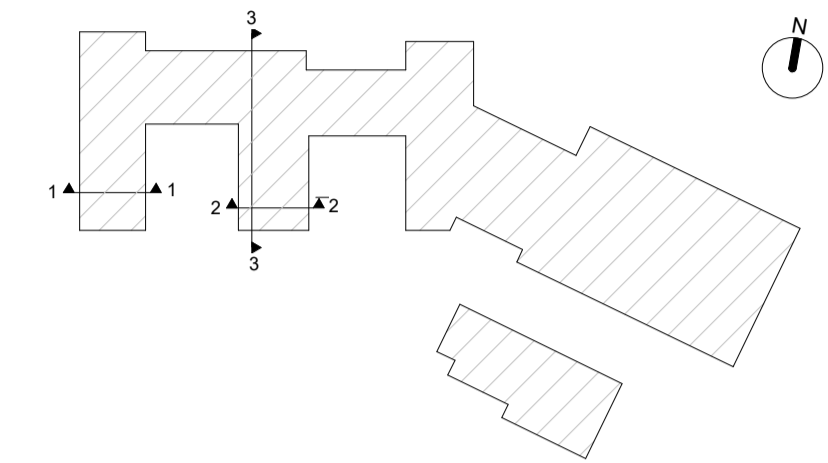
Notes:

© Rio Architects Ltd.

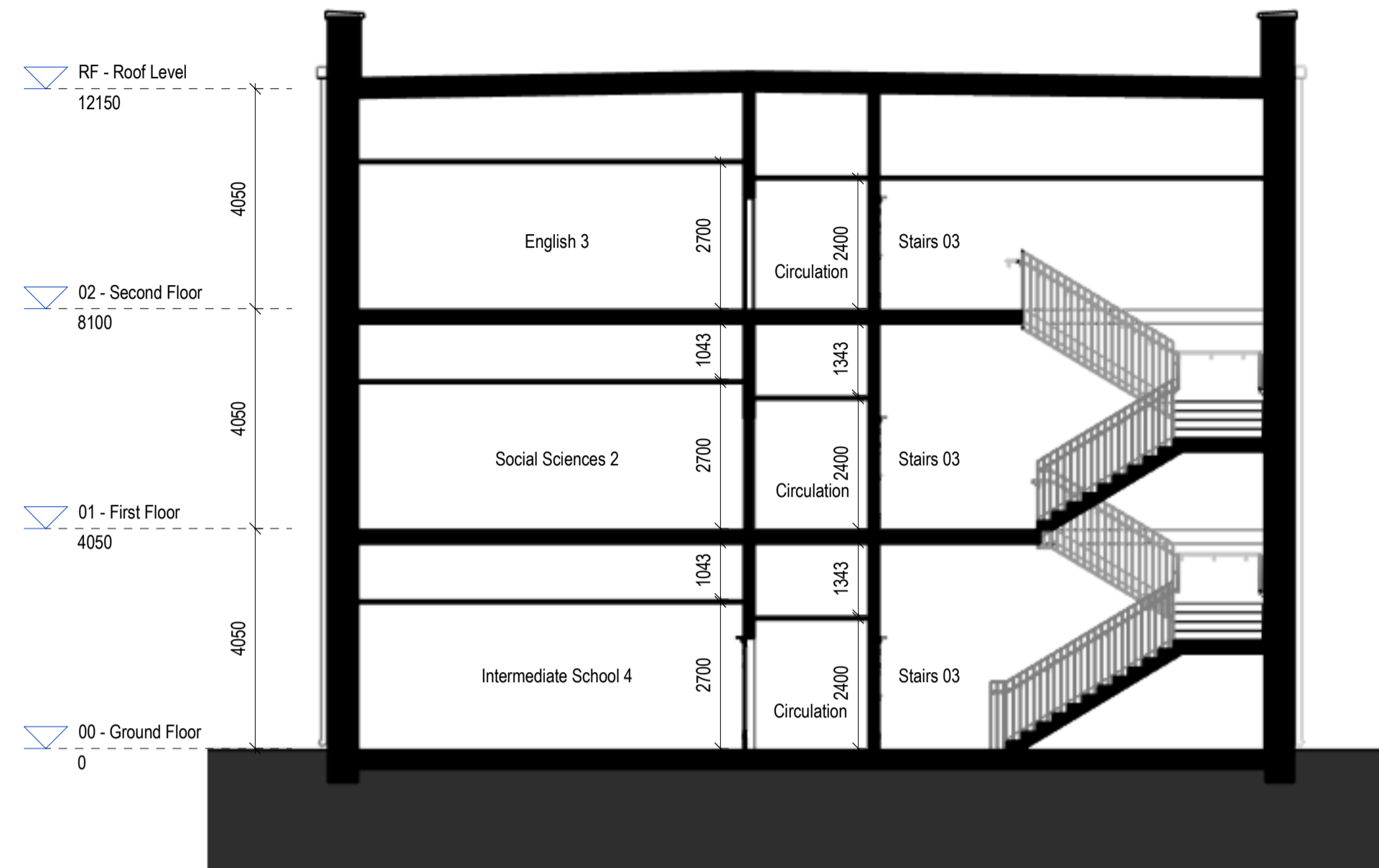
This drawing is copyright and must not be reproduced or disclosed to third parties without the prior written consent of Rio Architects Ltd.

This drawing is to be read in conjunction with all other relevant project drawings, specifications and schedules prepared by Rio Architects Ltd and any other relevant consultants, specialists or subcontractors.

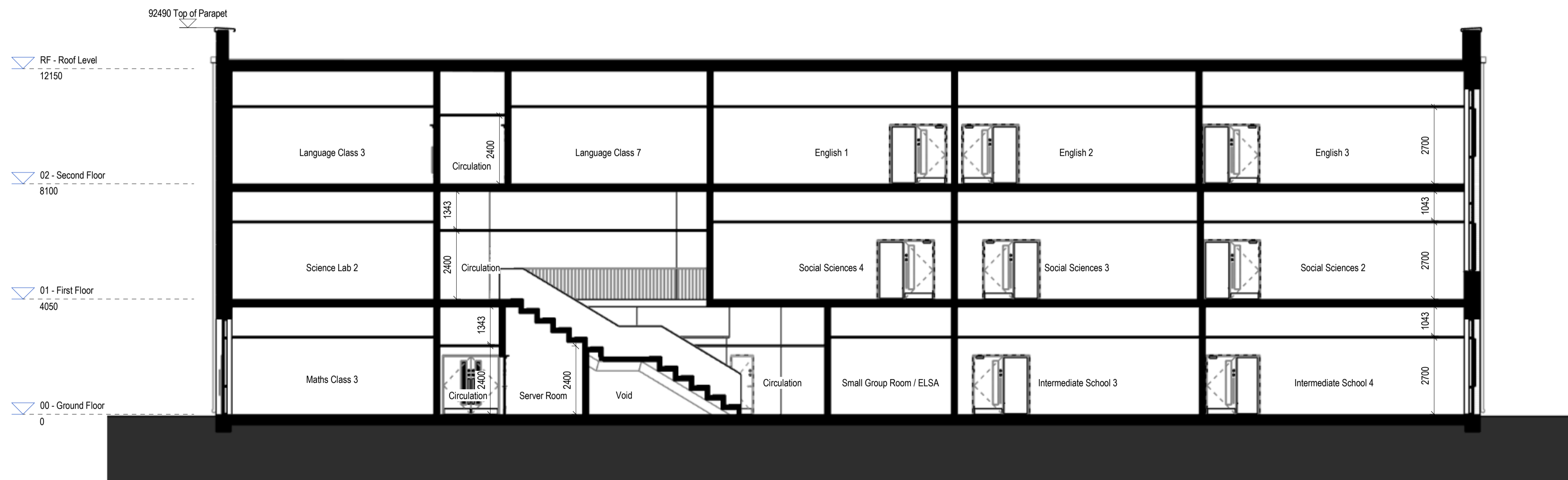
CDM notes are provided to assist the contractor in managing residual hazards identified during the design stage. Any such notes do not relieve the contractor of their duties under all relevant CDM Regulations.



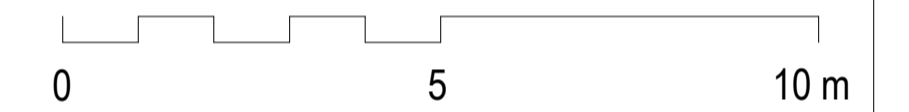
GA Section 1
Scale: 1 : 100



GA Section 2
Scale: 1 : 100



GA Section 3
Scale: 1 : 100



Rev	Description	Rev'd	Chk'd	Date
P01	First Issue (PAC)	AJ	AB	01.12.21

ADDASRWYDD: SUITABILITY: **PLANNING**

WIP	DOCUMENTATION - SIGN-OFF
S0 - Initial Status*	A1 - Authorised and Accepted
SHARED	B1 - Partially Signed-off.
S1 - Suitable for co-ordination**	ARCHIVE
S2 - Suitable for information	CR - Final Construction Record Document
S3 - Suitable for review and comment	* For internal pre-issue usage only.
S4 - Suitable for stage approval	** For model file usage only.
S5 - Withdrawn	
S6 - Suitable for PIM Authorisation	
S7 - Suitable for AIM Authorisation	

Rio studio@rioarchitects.com
www.rioarchitects.com
@rioarchitects

Rio Cardiff 21a Allensbank Road Cardiff CF14 3PN +44 (0)29 2025 0066
Rio London 19 21 Hatton Garden London EC1N 8BA +44 (0)20 3691 7565
Rio Scotland 1 Lochrin Square Edinburgh EH3 9QA +44 (0) 131 357 4211

Monmouthshire Council
Cyngor Sir Fynwy

TEITL CYWAITH: PROJECT TITLE:
Abergavenny 3-19 School
Ysgol 3-19 Y Fenni

TEITL ARLUNIO: DRAWING TITLE:
Toriad TC Ysgol Uchaf
GA Sections Upper School

TYNNY GAN: AJ GWIRIO GAN: JY CYMERAD GAN: AB
DRAWN BY: JY CHECKED BY: JY APPROVED BY: AB
RHIF SWYDD: 0395 GRADFFA: 1 : 100 @ A1

STATWS STATUS:	S2					
DYDDIAD: DATE:	10/08/21	ADOLYGIAD: REVISION:	P01			
PROJECT	TARDD.	CYFROL	LEFEL	MATH	DISG.	RHIF
26Z007	RIO	02	XX	DR	A	03-2301