

CAMROSE


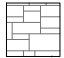
Type 1

Plots 4, 5, 14, 15, 55, 56, 64, 65, 67, 68, 79-82

GIA:
GIA measured from internal faces of external walls.
Area includes partitions and stairs.

GF: 44.18 sqm
FF: 43.63 sqm
Total: 87.81 sqm 945 sqft

Materials Key:

-  Through-colour render. Colour: white
-  Bradstone walling slips with random coursing. Colour: silver grey
- Windows: uPVC. Colour: anthracite grey
- Bay window cills: Portland recon stone
- Doors: GRP. Colour: anthracite grey
- Garage doors. Colour: anthracite grey
- Rainwater goods: uPVC. Colour: black
- Fascias and soffits: uPVC. Colour: black
- Pitched roofs: Fibre cement slate
- Flat roofs: Single ply membrane

OB Obscure glazing



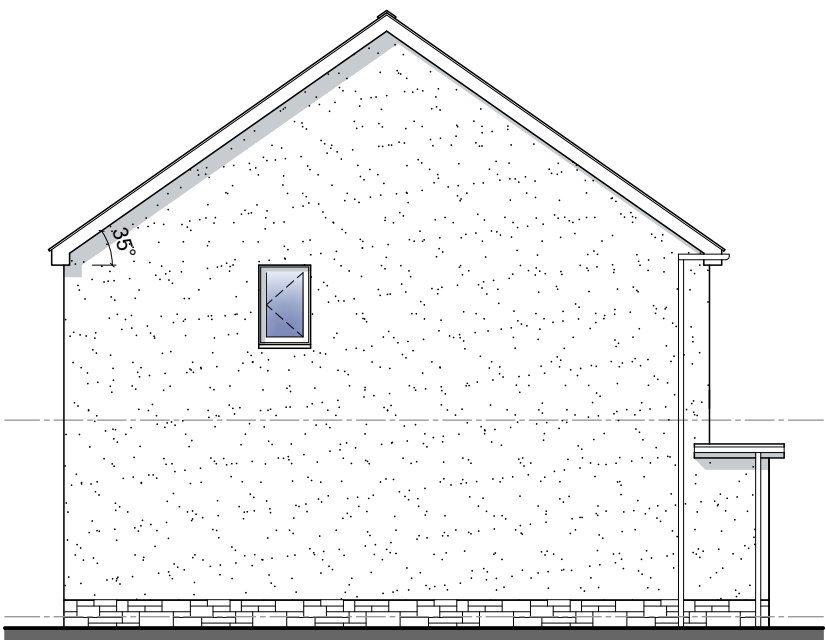
FRONT ELEVATION
Plots 15, 16, 49, 50, 54, 55, 79, 80



FRONT ELEVATION (ALTERNATIVE)
Plots 4, 5, 65-68



REAR ELEVATION



SIDE ELEVATION

Figured dimensions and levels to be used.
Any inaccuracies must be notified to the architect.
Detail drawings and large scale drawings take precedence over smaller drawings.

Rev:	Rev:	Rev:	Rev:

PRELIMINARY	
PLANNING	✓
DESIGN	
TENDER	
CONSTRUCTION	

powelldobson ARCHITECTS		Drawing No.	Rev.
		21049(05)1211 /	
<small>Cardiff Office: Suite 1F, Building One, Eastern Business Park, Wern Fawr Lane, Old St Mellons, Cardiff CF3 5EA Tel: +44 (0)33 33 201 001 Fax: +44 (0)29 2079 1212 email: cardiff@powelldobson.com</small>		Contract:	Morganstone
		Title:	Former Olchfa School Site
			Camrose: Type 1 - Elevations
Scale:	1:100 @ A3	Date:	14/12/2021
Drawn:	AJP	Checked:	BK