

# Harlech

## Type 1

Plots 28, 71

GIA:  
GIA measured from internal faces of external walls.  
Area includes partitions and stairs.

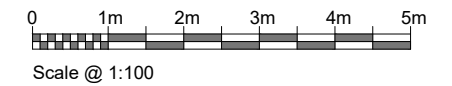
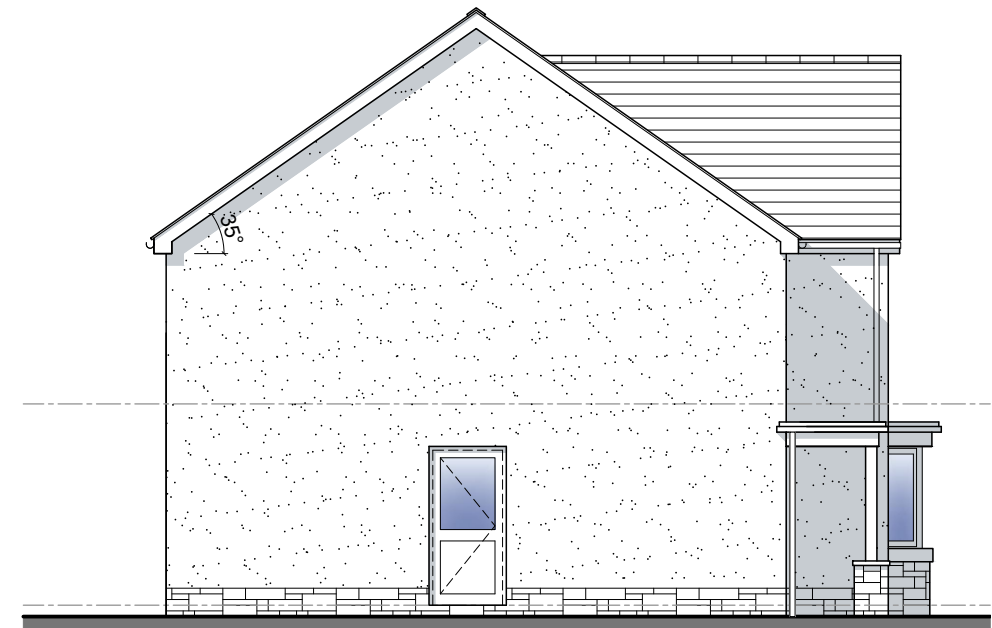
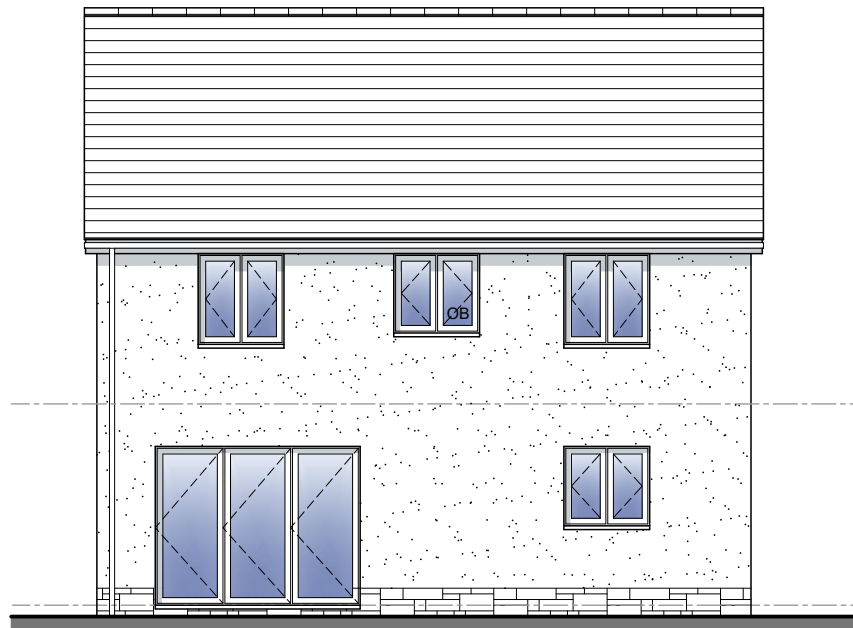
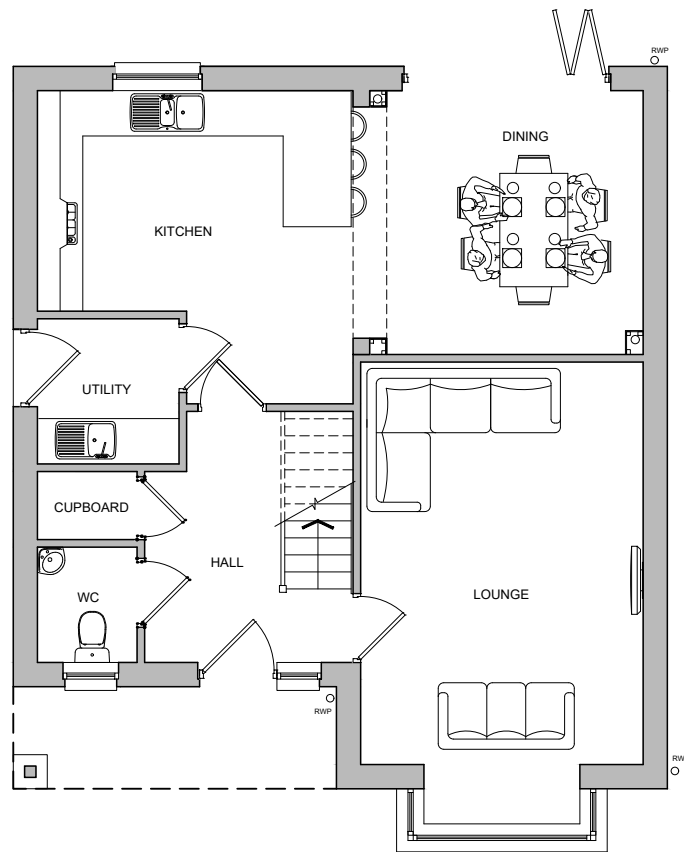
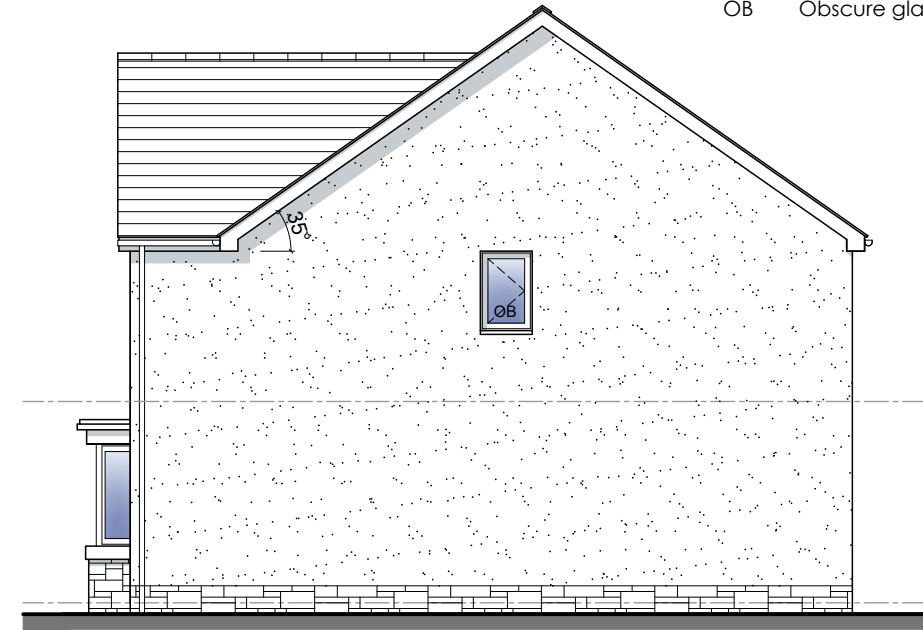
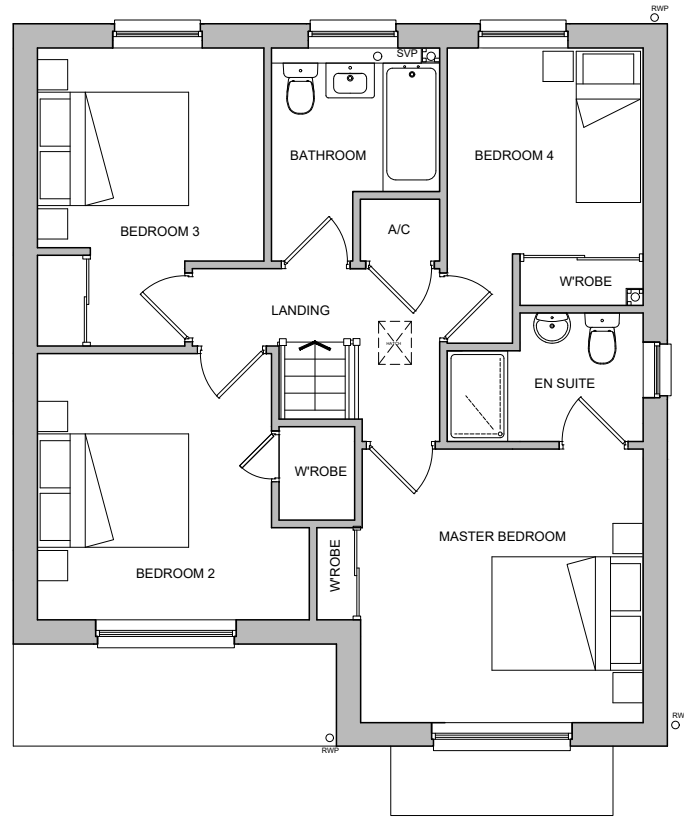
GF: 65.64 sqm  
FF: 65.64 sqm  
**Total: 131.28 sqm 1,413 sqft**

**Materials Key:**

- Through-colour render. Colour: white
- Bradstone walling slips with random coursing. Colour: silver grey

Windows: uPVC. Colour: anthracite grey  
Bay window cills: Portland recon stone  
Doors: GRP. Colour: anthracite grey  
Garage doors: Colour: anthracite grey  
Rainwater goods: uPVC. Colour: black  
Fascias and soffits: uPVC. Colour: black  
Pitched roofs: Fibre cement slate  
Flat roofs: Single ply membrane

OB Obscure glazing



Figured dimensions and levels to be used. Any inaccuracies must be notified to the architect. Detail drawings and large scale drawings take precedence over smaller drawings.

Rev:	Rev:	Rev:	Rev:

PRELIMINARY	
PLANNING	✓
DESIGN	
TENDER	
CONSTRUCTION	

**powelldobson**  
ARCHITECTS

Cardiff Office: Suite 1F, Building One, Eastern Business Park, Wern Fawr Lane, Old St Mellons, Cardiff CF3 5EA  
Tel: +44 (0)33 33 201 001 Fax: +44 (0)29 2079 1212 email: cardiff@powelldobson.com

Contract: **Morganstone**  
**Former Olchfa School Site**  
Title: **Harlech: Type 1 - Plans Elevations**

Drawing No. **21049(05)1230 /** Rev.

Scale: **1:100 @ A3**  
Date: **14/12/2021**  
Drawn: **AJP**  
Checked: **BK**