

PEMBROKE

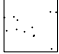
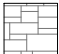
Type 2

Plots 1, 6, 9, 10, 40, 43, 72,
90, 98, 101

GIA:
GIA measured from internal faces of external walls.
Area includes partitions and stairs.

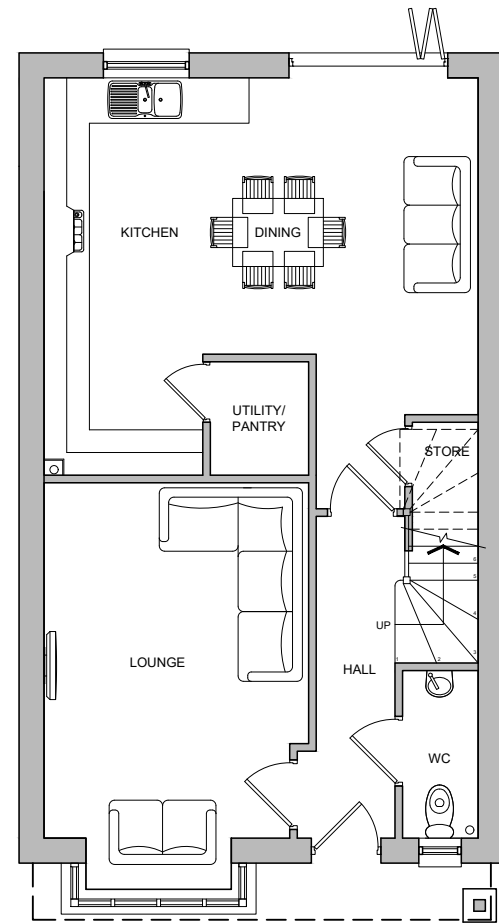
GF: 59.04 sqm
FF: 49.13 sqm
Total: 108.17 sqm 1,164 sqft

Materials Key:

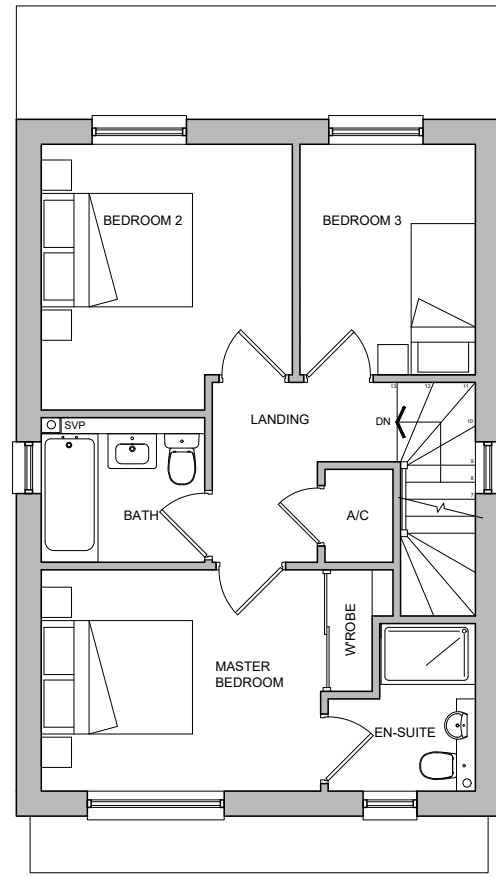
-  Through-colour render. Colour: white
-  Bradstone walling slips with random coursing. Colour: silver grey

Windows: uPVC. Colour: anthracite grey
Bay window cills: Portland recon stone
Doors: GRP. Colour: anthracite grey
Garage doors: Colour: anthracite grey
Rainwater goods: uPVC. Colour: black
Fascias and soffits: uPVC. Colour: black
Pitched roofs: Fibre cement slate
Flat roofs: Single ply membrane

OB Obscure glazing



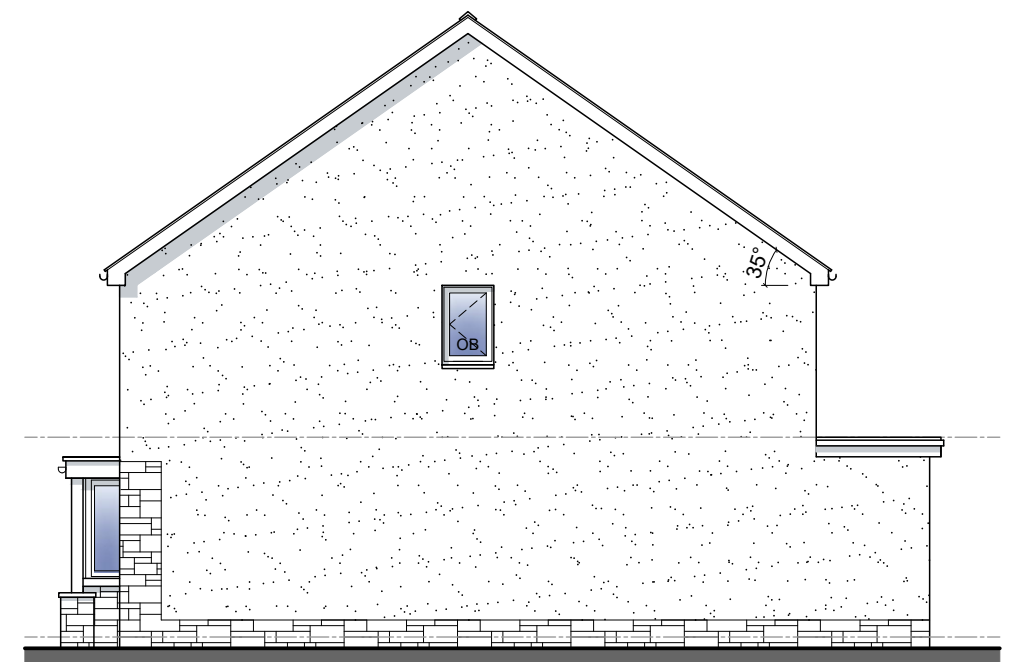
GROUND FLOOR PLAN



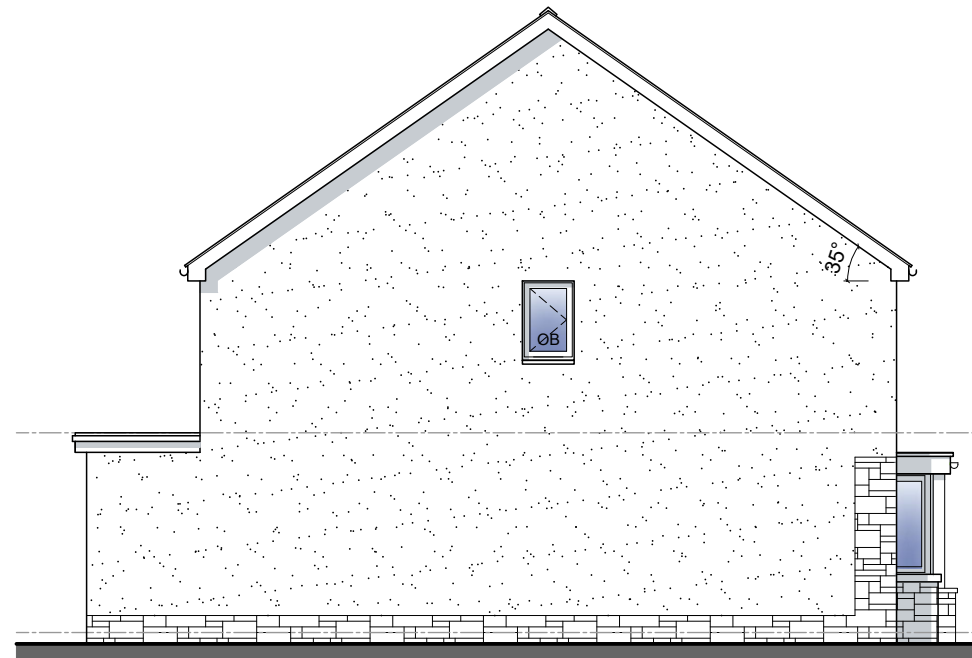
FIRST FLOOR PLAN



FRONT ELEVATION



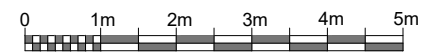
SIDE ELEVATION 1



SIDE ELEVATION 2



REAR ELEVATION



Scale @ 1:100

Figured dimensions and levels to be used.
Any inaccuracies must be notified to the architect.
Detail drawings and large scale drawings take precedence over smaller drawings.

Rev:	Rev:	Rev:	Rev:

PRELIMINARY	
PLANNING	✓
DESIGN	
TENDER	
CONSTRUCTION	

powelldobson
ARCHITECTS

Cardiff Office: Suite 1F, Building One, Eastern Business Park, Wern Fawr Lane, Old St Mellons, Cardiff CF3 5EA
Tel: +44 (0)33 33 201 001 Fax: +44 (0)29 2079 1212 email: cardiff@powelldobson.com

Contract: Morganstone
Former Olchfa School Site
Title: Pembroke Type 2 - Plans and Elevations

Drawing No. 21049(05)1251 /
Rev. 1:100 @ A3
Date: 14/12/2021
Drawn: AJP
Checked: BK