

USK

Type 1

Plots 30, 31, 99, 100

GIA:

GIA measured from internal faces of external walls.
Area includes partitions and stairs.

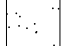
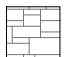
GF: 59.04 sqm

FF: 49.13 sqm

SF: 29.28 sqm

Total: 137.45 sqm 1,479 sqft

Materials Key:

-  Through-colour render. Colour: white
-  Bradstone walling slips with random coursing. Colour: silver grey

- Windows: uPVC. Colour: anthracite grey
- Bay window cills: Portland recon stone
- Doors: GRP. Colour: anthracite grey
- Garage doors. Colour: anthracite grey
- Rainwater goods: uPVC. Colour: black
- Fascias and soffits: uPVC. Colour: black
- Pitched roofs: Fibre cement slate
- Flat roofs: Single ply membrane

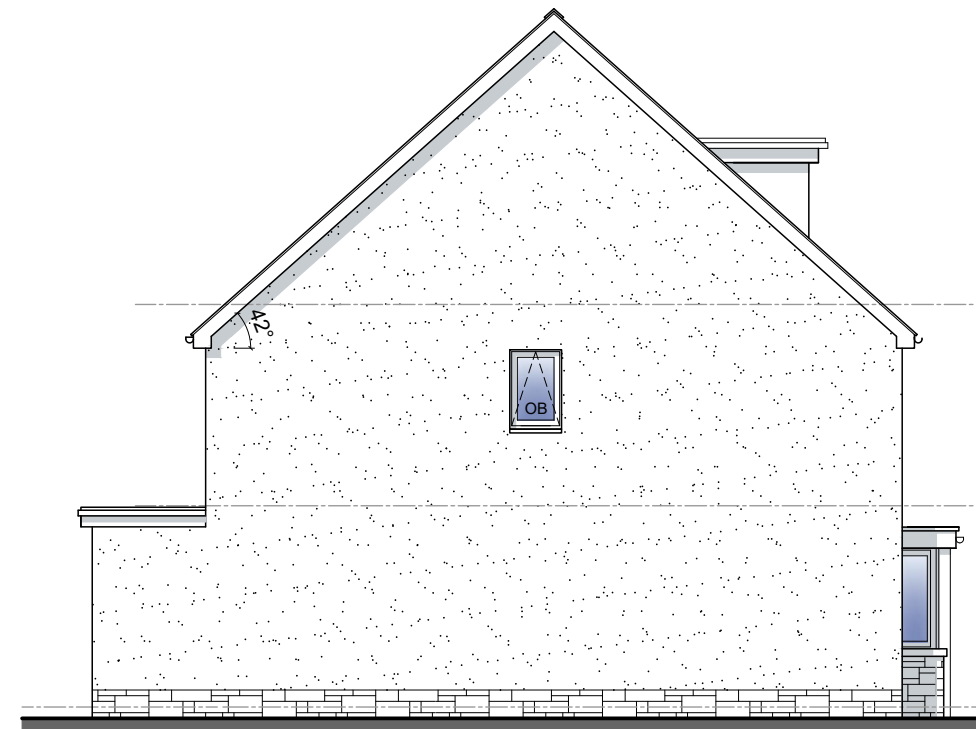
OB Obscure glazing



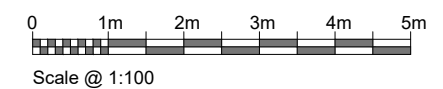
FRONT ELEVATION



REAR ELEVATION



SIDE ELEVATION



Figured dimensions and levels to be used.
Any inaccuracies must be notified to the architect.
Detail drawings and large scale drawings take precedence over smaller drawings.

Rev:

Rev:

Rev:

Rev:

PRELIMINARY	
PLANNING	✓
DESIGN	
TENDER	
CONSTRUCTION	

powelldobson
ARCHITECTS

Cardiff Office: Suite 1F, Building One, Eastern Business Park, Wern Fawr Lane, Old St Mellons, Cardiff CF3 5EA
Tel: +44 (0)33 33 201 001 Fax: +44 (0)29 2079 1212 email: cardiff@powelldobson.com

Contract: **Morganstone**
Former Olchfa School Site

Title: **Usk: Type 1 - Elevations**

Drawing No. Rev.
21049(05)1261 /

Scale: 1:100 @ A3
Date: 14/12/2021
Drawn: AJP
Checked: BK