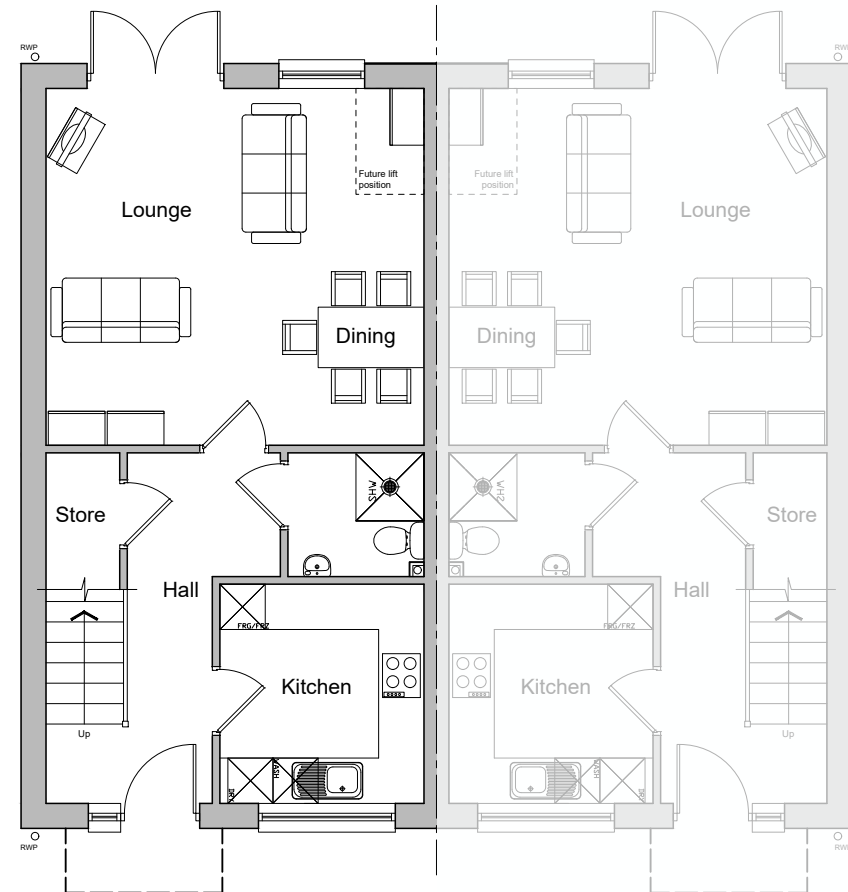


Dryslwyn

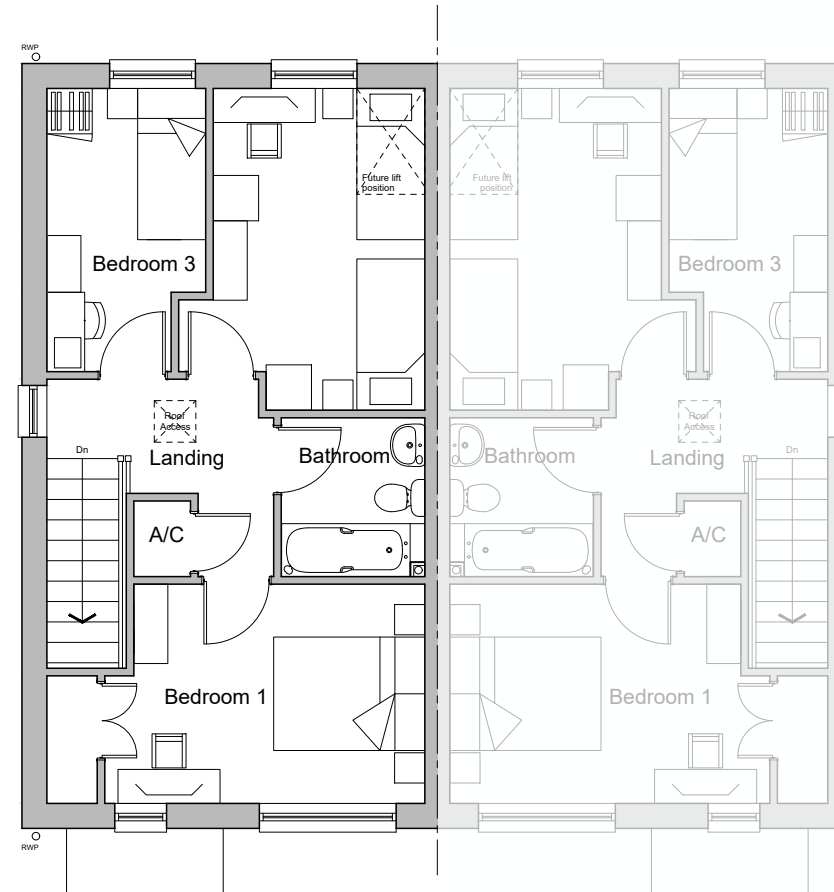
Plots 18-23, 77, 78

GIA:
GIA measured from internal faces of external walls.
Area includes partitions and stairs.

GF: 47.23 sqm
FF: 47.23 sqm
Total: 94.46 sqm 1,016 sqft



GROUND FLOOR PLAN



FIRST FLOOR PLAN

Figured dimensions and levels to be used.
Any inaccuracies must be notified to the architect.
Detail drawings and large scale drawings take precedence over smaller drawings.

Rev: | |

Rev: | |

Rev: | |

Rev: | |

PRELIMINARY	
PLANNING	✓
DESIGN	
TENDER	
CONSTRUCTION	

powelldobson
ARCHITECTS

Cardiff Office: Suite 1F, Building One, Eastern Business Park, Wern Fawr Lane, Old St Mellons, Cardiff CF3 5EA
Tel: +44 (0)33 33 201 001 Fax: +44 (0)29 2079 1212 email: cardiff@powelldobson.com

Drawing No. Rev.
21049(05)1310 /

Contract: Morganstone
Former Olchfa School Site
Title: Dryslwyn - Plans

Scale: 1:100 @ A3
Date: 14/12/2021
Drawn: AJP
Checked: BK